



TOWNSEND

CENTER FOR THE HUMANITIES UC BERKELEY

April/May 2012



Lisbet Rausing, Una's Lecturer, see p. 3

HIGHLIGHTS

15 Peter Singer

19 Rita Raley

23 Gary Snyder



Depth of Field Film + Video Series, see p. 14

TOWNSEND NEWSLETTER

The Doreen B. Townsend Center for the Humanities
at the University of California, Berkeley

APRIL/MAY 2012

STAFF

ACTING DIRECTOR

Celeste Langan, Associate Professor of English

ASSOCIATE DIRECTOR

Teresa Stojkov

PROGRAM ADMINISTRATOR

Julie Van Scoy

WEB AND COMMUNICATIONS SPECIALIST

Angela Veomett

BUSINESS AND OFFICE MANAGER

Melissa Wong

FELLOWSHIPS ADMINISTRATOR

Scott Roberts

FACULTY ADVISORY COMMITTEE

John Efron, History

Victoria Kahn, English

Ken Goldberg, Industrial Engineering
and Operations Research

Robert Hass, English

Martin Jay, History

Niklaus Largier, German and Comparative Literature

Francine Masiello, Spanish and Comparative Literature

Carolyn Merchant, College of Natural Resources

Geoffrey Nunberg, School of Information

Nancy Scheper-Hughes, Anthropology

Hans Sluga, Philosophy

Bonnie Wade, Music

TABLE OF CONTENTS

- 3 [The Total Library: Lisbet Rausing and a
New Alexandria](#)
Teresa Stojkov
- 5 [The Townsend Papers in the Humanities](#)

- 6 [Calendar of Campus Events](#)

TOWNSEND CENTER FOR THE HUMANITIES

University of California
220 Stephens Hall, MC 2340
Berkeley, CA 94720-2340

TEL: 510/643-9670

FAX: 510/643-5284

EMAIL: townsend_center@ls.berkeley.edu

WEB: <http://townsendcenter.berkeley.edu>

The Total Library: Lisbet Rausing and a New Alexandria

by Teresa Stojkov



The Library is unlimited and cyclical. If an eternal traveler were to cross it in any direction, after centuries he would see that the same volumes were repeated in the same disorder (which, thus repeated, would be an order: the Order). My solitude is gladdened by this elegant hope.

Jorge Luis Borges

On August 24, 2011 Google commemorated the 112th birthday of Jorge Luis Borges with one of its now famous *doodles* portraying the Argentine writer overlooking a futuristic cityscape made up of galleries, staircases and bookshelves. The *doodle* is in part inspired by one of Borges' most famous tropes, the infinite library as depicted in his 1941 short story "The Library of Babel"—a library that contains every book ever written and every book that might ever be written. "[It] is composed of an indefinite and perhaps infinite number of hexagonal galleries, with vast air shafts between, surrounded by very low railings." The librarians wander about, trying to find the catalogue of catalogues. Their one persistent though futile hope is the discovery of a book that is the key to all other books—the perfect compendium, housed in a crimson hexagon.

The dream of an all-encompassing archive of the entire world's knowledge is no less alluring today, seven decades after Borges published "The Library of Babel." For Lisbet Rausing, the 2012 Una's Lecturer, and many others, this

new Alexandria is rising around us through a technology just as astonishing and prodigious in its electronic capacity to acquire, "catalogue" and store . . . well, everything. Rausing, a historian of science at Imperial College, has written forcefully on the subject and on the need for scholars—humanists and social scientists in particular—to confront twenty-first-century questions of near-infinity and open-access knowledge.

Writing in *The New Republic* in 2010, she argues that compiling the "total library" is no longer a question of *if*, or even *when*, but *by whom* and *for whom*. At the core of her inquiry—beyond the usual landmarks of law, finance, organization—lies Rausing's elegant hope: that scholars might embrace open, public access to scholarship with a sense of urgency. Can we be our own best guardians and the guardians of a profoundly democratic vision of universal learning and education?

The stakes of non-participation in the new world of open-access knowledge are undeniably high. Google vice president Marissa Mayer's early shot across the bow is now infamous: "Google has become known for providing access to all of the world's knowledge, and if we provide access to books we are going to get much higher-quality and much more reliable information. We are moving

up the food chain.” Much has happened since Google made its first overtures to university libraries in 2002. Yet, in face of such ambition or hubris, one cannot help but return to Borges: “When it was proclaimed that the Library comprised all books, the first impression was extravagant joy. [. . .] Thousands of the greedy abandoned their sweet native hexagons and rushed up the stairways, urged on by the vain intention of finding their Vindication. These pilgrims disputed in the narrow corridors, proffered dark curses, strangled each other on the divine stairways, flung the deceptive books into the air shafts, and met their death cast down in a similar fashion by the inhabitants of remote regions. Others went mad . . .”

Teresa Stojkov is Associate Director of the Doreen B. Townsend Center for the Humanities.

Una's Lecturer 2011-2012 Events

"Who Guards the Guardians? Professors, Publishing, and the Public"

Monday, April 9, 2012

6 p.m. | Maude Fife Room, 315 Wheeler Hall

Follow-up Panel Discussion with Lisbet Rausing

Tuesday, April 10, 2012

4-6 p.m. | Geballe Room, 220 Stephens Hall

Rausing in discussion with **Anthony Cascardi** (Dean, Arts & Humanities), **Carla Hesse** (Dean, Social Sciences), **AnnaLee Saxenian** (Dean, School of Information), and **Thomas Leonard** (University Librarian).

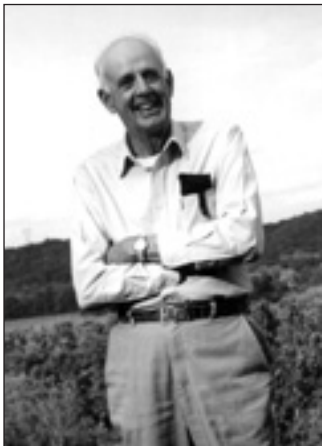
2012-2013 PREVIEW



Next year the Townsend Center will host several notable lectures in celebration of its 25th year. Below are a sample of featured speakers. Check back on our website soon for more updates.

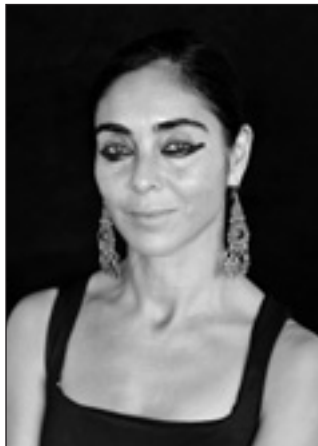
Wendell Berry

Writer and Cultural Critic



Shirin Neshat

Visual Artist



Vikram Seth

Poet and Writer



For more information, please visit:
TOWNSENDCENTER.BERKELEY.EDU

THE TOWNSEND PAPERS IN THE HUMANITIES



Launched in 2009, *The Townsend Papers in the Humanities* feature short works on topics of broad interest in the humanities and interpretive social sciences. The most recent volume in the series commemorates the 25th year of the Townsend Center, presenting a collection of revised versions of endowed lectures and other presentations organized at the Center over the years.



No. 4

Critical Views: Essays on the Humanities and the Arts

Kwame Anthony Appiah, J.M. Coetzee, Arthur Danto, Mike Davis, Anthony Grafton, Seamus Heaney, Michael Ignatieff, Ivan Klíma, Maya Lin, Kenzaburō Ōe, Michael Pollan, Sebastião Salgado, Peter Sellars, Maurice Sendak

Edited by Teresa Stojkov

\$24.95, £16.95 Paperback



No. 1

Nietzsche's Negative Ecologies

Malcolm Bull, Anthony J. Cascardi, T.J. Clark

\$16.95, £11.95 Paperback



No. 2

Is Critique Secular? Blasphemy, Injury, and Free Speech

Talal Asad, Wendy Brown, Judith Butler, Saba Mahmood

\$16.95, £11.95 Paperback



No. 3

Art and Aesthetics After Adorno

Jay M. Bernstein, Claudia Brodsky, Anthony J. Cascardi, Thierry de Duve, Aleš Erjavec, Robert Kaufman, Fred Rush

\$18.95, £12.95 Paperback



April 24
Student Symposium
 Course Threads Program

page 17

HIGHLIGHTS



On Display until May 4
Luminous
 Watercolor Paintings by Darril Tighe

page 23

SUNDAY, APRIL 1

P Jonathan Biss, piano



Photo by Jillian Edelstein

CAL PERFORMANCES

3 p.m. | Hertz Concert Hall
 Pre-performance talk at 2 p.m. by UC Berkeley musicologist Rachana Vajjhala.
 Tickets required.
 Event Contact: 510-642-9988

MONDAY, APRIL 2

L *Curtain up in the Roman Courtroom*

LATE ANTIQUE RELIGIONS ET SOCIETIES WORKING GROUP

1–2:30 p.m. | 3335 Dwinelle Hall

Speaker: Roland Färber, Kommission für Alte Geschichte und Epigraphik, München

Event Contact: jwt@berkeley.edu

P *Wanitani: Songs for the Indonesian Women's Movement*

CENTER FOR SOUTHEAST ASIA STUDIES

5–7 p.m. | Institute of East Asian Studies, 2223 Fulton

A special presentation of original music by *Orkes Manohara*, featuring dancer Wilis Ekowati.

Event Contact: 510-642-3609

L **The Comatose, The Cadaver and The Chimera: Alternate Anatomical Architectures**

Art, Technology, and Culture Colloquium



BERKELEY CENTER FOR NEW MEDIA

7:30–9 p.m. | Banatao Auditorium, Sutardja Dai Hall

Speaker: Stelarc, performance artist, Melbourne

Event Contact: 510-495-3505

TUESDAY, APRIL 3

L **Politics of Culture and Nature in China's Northwest**

INSTITUTE OF EAST ASIAN STUDIES

12–1 p.m. | Institute of East Asian Studies, 2223 Fulton

Speaker: You-tien Hsing, Geography, UC Berkeley

Event Contact: 510-642-2809

F **Our Summer In Tehran (Justine Shapiro, 2009)**

I-House Film Series



INTERNATIONAL HOUSE

7–9 p.m. | Chevron Auditorium, International House

Jewish American filmmaker Justine Shapiro and her 6 year-old son Mateo spend the summer with three middle-class families in Tehran, Iran, transcending overt politics in favor of subtle, human, and often humorous moments.

Event Contact: 510-642-9460

WEDNESDAY, APRIL 4

P **Composer Cindy Cox**

Noon Concert Series

DEPARTMENT OF MUSIC

12:15–1 p.m. | Hertz Concert Hall

Faculty recital featuring new pieces by Berkeley composer and pianist Cindy Cox, with violinist Hrabba Atladottir, pianist Karen Rosenak, and the Alexander String Quartet.



Event Contact: 510-642-4864

L **The Cold War and its Impact on U.S.-Indonesian Relations**

CENTER FOR SOUTHEAST ASIA STUDIES

12:30–2 p.m. | Institute of East Asian Studies, 2223 Fulton

Speaker: Baskara Wardaya, Director, Center for History and Political Ethics, Sanata Dharma University, Indonesia

Event Contact: 510-642-3609

L **Managing Groundwater as if the Environment Mattered**

COLLEGE OF ENVIRONMENTAL DESIGN

1–2 p.m. | 315A Wurster Hall

Speaker: Matthew Heberger, Pacific Institute, Oakland, California

Event Contact: abl@berkeley.edu

L **Wutai Shan, the Mongols, and Qing Cosmopolitanism**

INSTITUTE OF EAST ASIAN STUDIES

4 p.m. | Institute of East Asian Studies, 2223 Fulton

Speaker: Johan Elverskog, Religious Studies, Southern Methodist University, and Visiting Fellow, Stanford University

Event Contact: 510-642-2809

L **Why Pakistan Matters in U.S. Foreign Policy**



INSTITUTE OF INTERNATIONAL STUDIES

4–5:30 p.m. | 223 Moses Hall

Speaker: Neil Joeck, Senior Fellow, Center for Global Security Research

Event Contact: 510-642-2472

L **Dan Pitera**

CED Lecture Series

COLLEGE OF ENVIRONMENTAL DESIGN

6:30–7:30 p.m. | 112 Wurster Hall

Speaker: Dan Pitera, Executive Director of the Detroit Collaborative Design Center, University of Detroit Mercy School of Architecture

Event Contact: 510-664-4442

THURSDAY, APRIL 5

L **Lunch Poems Presents Richard Berengarten**
THE LIBRARY

12:10–12:50 p.m. | Morrison Room, 101 Doe Library

The author of more than twenty books, Berengarten has been a maverick in contemporary British poetry. Two of his books are regarded as contemporary classics: *The Manager* and *The Blue Butterfly*, an elegy for victims of a Nazi massacre in former Yugoslavia.



Event Contact: poems@library.berkeley.edu

THURSDAY, APRIL 5 (CONT'D)

L Political Encounters and Engagements: A Spotlight on Undergraduate Student Research

CENTER FOR RACE AND GENDER

4–5:30 p.m. | 691 Barrows Hall

Forum on emerging research by UC Berkeley undergraduate student grant recipients.

Event Contact: 510-643-8488

L The Enduring Crisis of Humanitarianism

INSTITUTE OF INTERNATIONAL STUDIES

4–5:30 p.m. | 223 Moses Hall

Speaker: Tom Farer, International Studies, University of Denver

Event Contact: 510-642-2472

L Planning against Planning: The Mont Pelerin Society and the Origins of Neoliberalism

CENTER FOR THE COMPARATIVE STUDY OF RIGHT-WING MOVEMENTS

4–5:30 p.m. | Wildavsky Conference Room, Anna Head Building, 2538 Channing Way

Speaker: Angus Burgin, History, Johns Hopkins University

Event Contact: 510-642-0813

L Dan Chatman

CED Lecture Series

COLLEGE OF ENVIRONMENTAL DESIGN

4–5 p.m. | 106 Wurster Hall

Speaker: Dan Chatman, City and Regional Planning, UC Berkeley

Event Contact: 510-664-4442

L Control in the Operating Room

SCIENCE, TECHNOLOGY, AND SOCIETY CENTER

4–6 p.m. | 470 Stephens Hall

Speaker: Rachel Prentice, Cornell University

Event Contact: cstms@berkeley.edu

EVENT KEY

- F** FILM
- E** EXHIBITIONS
- P** PERFORMANCES
- L** CONFERENCES, LECTURES, AND READINGS

L Risking Identification: Reading For and Against Type in Early Modern Narrative

DEPARTMENT OF ENGLISH

5 p.m. | 4337 Dwinelle Hall

Speaker: Amelia Zurcher, English, Marquette University

Event Contact: vkahn@berkeley.edu

L Riffat Masood

CENTER FOR SOUTH ASIA STUDIES

5–7 p.m. | 10 Stephens Hall

Speaker: The Honorable Riffat Masood, Consul General of Pakistan in Los Angeles

Event Contact: 510-642-3608

L The Lettrist Mystic Abd al-Rahman al-Bistami (d. 1454), the New Brethren of Purity, and the Sources of Ottoman Historical Consciousness

CENTER FOR MIDDLE EASTERN STUDIES

5 p.m. | 340 Stephens Hall

Speaker: Cornell Fleischer, History, University of Chicago

Event Contact: cmes@berkeley.edu

L Hollywood Costume: The Good, the Bad, and the Beautiful



BERKELEY ART MUSEUM

7 p.m. | Pacific Film Archive Theater

In this illustrated talk, Deborah Nadoolman Landis discusses costume and storytelling. She will be joined by her husband, director John Landis, to introduce their comedy, *¡Three Amigos!*, which screens immediately after the talk and discussion, at 8:30.

Tickets required.

Event Contact: 510-642-1412

P "Boy" and "Dia: Diagnosis to Dialogue, Clinic to Theater"

DEPARTMENT OF THEATER, DANCE & PERFORMANCE STUDIES

8 p.m. | 7 Zellerbach Hall

In *Boy*, Langston Brand examines a 15-year-old adolescent's experience of identity construction, and in *Dia: Diagnosis to Dialogue, Clinic to Theater*, Cole Ferraiuolo looks at the creation of doctor/patient relationships in a clinic in San Francisco's Tenderloin district.

Tickets required.

Event Contact: 510-642-8827

FRIDAY, APRIL 6

L Graduate School of Education Research Day 2012

GRADUATE SCHOOL OF EDUCATION

9 a.m.–5 p.m. | Tolman Hall

Conference produced by students and faculty at the Graduate School of Education to celebrate scholarship and community.

Event Contact: GSEResearchDay@Gmail.com

L Quinto Sol Remembered

DEPARTMENT OF ETHNIC STUDIES

9 a.m.–5 p.m. | Maude Fife Room, 315 Wheeler Hall

A two-day symposium commemorating the 45th anniversary of Quinto Sol, the first Chican@ publishing house and its interdisciplinary magazine *El Grito*, which was founded in 1967 with the efforts of UC Berkeley students and faculty.

Event Contact: johuerta@berkeley.edu

L 4th Annual UC Berkeley Sociological Research Symposium

DEPARTMENT OF SOCIOLOGY

10 a.m.–4 p.m. | Pauley Ballroom East, Martin Luther King Jr. Student Union

This year, the symposium will center on the theme, "Identity, Ideology, and Society: (Re-)(Dis-) Connecting Patterns of Discourse."

Event Contact:

ucberkeley Symposium@gmail.com

L Incidence and Refraction: The Prismatic Structure of Die Wahlverwandtschaften

DEPARTMENT OF GERMAN

12-1 p.m. | 282 Dwinelle Hall

Speaker: Monica Felix

Event Contact: 510-643-2004

L In Search of the Origins of Domestic Water Buffalo in China

CENTER FOR CHINESE STUDIES

12:05-1 p.m.

3401 Dwinelle Hall

Speaker: Li Liu, East Asian Languages and Cultures, Stanford University

Event Contact: 510-643-6321



L Healing Texts, Healing Practices, Healing Bodies: A Workshop on Medicine and Buddhism



CENTER FOR JAPANESE STUDIES

2:30-5 p.m. | 370 Dwinelle Hall

This workshop brings together experts on Japanese, Chinese, and Tibetan religions and medicine to discuss the intersections of ritual and medical practices of each region by taking a multicultural approach to the issues of health, disease, and body.

Event Contact: 510-642-3156

L Vijay Iyer

Composition Colloquia Series

DEPARTMENT OF MUSIC

3-4:30 p.m. | Elkus Room, 125 Morrison Hall

Event Contact: 510-642-2678

L Teaching as a Subversive Activity – Revisited

BERKELEY LANGUAGE CENTER

3-5 p.m. | B4 Dwinelle Hall

Speaker: H. Douglas Brown, English, San Francisco State University

Event Contact: 510-877-4002

L Photography and Time: A Conversation

TOWNSEND CENTER "STILL PICTURES" COURSE THREAD

3:30-6:30 p.m. | Geballe Room, 220 Stephens Hall

A conversation with Marta Braun, Mary Ann Doane, and Suzanne Guerlac that will address the various temporal horizons of photography and photographic processes, including issues such as movement (chronophotography, the floue), the time of the index and of the (latent) image, memory and the time of development, as well as the relation of photography to what Bergson called the "cinematographic illusion."

Event Contact: jbecker@berkeley.edu

L The Singular Development of a Tourist Town: Politics, Medicine, Society, and Tourism in Vichy

TOURISM STUDIES WORKING GROUP

4-6 p.m. | 101 Archaeological Research Facility, 2251 College

Speaker: Bert Gordon, Professor of European History and Chair of the Social Sciences Division, Mills College

Event Contact: jendevine@berkeley.edu

L "Ritual" and Performance—Rhetoric, Embodiment, and Agency across Contexts and Vantage Points

DANCE STUDIES WORKING GROUP

5-7 p.m. | 126 Dwinelle Annex

Speaker: Chia-Yi Seetoo, Theater, Dance, & Performance Studies, UC Berkeley

Event Contact: 510-642-1677

L Nature and Encyclopedism in Sixth-Century Legal and Political Discourse

LATE ANTIQUE RELIGIONS ET SOCIETIES WORKING GROUP

5:30-7 p.m. | 3401 Dwinelle Hall

Speaker: Shane Bjornlie, History, Claremont McKenna College

Event Contact: jwt@berkeley.edu

L American Graffiti, (George Lucas, 1973): Behind the Scenes: The Art and Craft of Cinema

BERKELEY ART MUSEUM

7 p.m. | Pacific Film Archive Theater

Costume designers Aggie Guerard Rodgers and Deborah Nadoolman



Landis in conversation.

Tickets required.

Event Contact: 510-642-1412

P "Boy" and "Dia: Diagnosis to Dialogue, Clinic to Theater"

DEPARTMENT OF THEATER, DANCE & PERFORMANCE STUDIES

8 p.m. | 7 Zellerbach Hall

See Thursday, April 5 listing for details.

SATURDAY, APRIL 7

L Healing Texts, Healing Practices, Healing Bodies: A Workshop on Medicine and Buddhism

CENTER FOR JAPANESE STUDIES

10 a.m.-5 p.m. | 370 Dwinelle Hall

See Friday, April 6 listing for details.

F Chekhov for Children (Sasha Waters Freyer, 2010)

Afterimage: Filmmakers and Critics in Conversation

BERKELEY ART MUSEUM

4 p.m. | Pacific Film Archive Theater

Introduction by Phillip Lopate.

Tickets required.

Event Contact: 510-642-1412

SATURDAY, APRIL 7 (CONT'D)

F **A Soldier's Daughter Never Cries** (James Ivory, 1998)

BERKELEY ART MUSEUM

7 p.m. | Pacific Film Archive Theater
James Ivory and Phillip Lopate in conversation.

Tickets required.

Event Contact: 510-642-1412

P **"Boy" and "Dia: Diagnosis to Dialogue, Clinic to Theater"**

DEPARTMENT OF THEATER, DANCE
& PERFORMANCE STUDIES

8 p.m. | 7 Zellerbach Hall

See Thursday, April 5 listing for details.

P **African Music and Dance: African Energy for the Spirit**



DEPARTMENT OF MUSIC

8–10 p.m. | Hertz Concert Hall

African Music and Dance Ensemble, CK Ladzekpo, director; Fua Dia Congo, Muisi-Kongo Malonga, director; and UCB African Music Ensemble, CK Ladzekpo, director

Tickets required.

Event Contact: 510-642-4864

MONDAY, APRIL 9

L **Una's Lecturer, Lisbet Rausing: Who Guards the Guardians? Professors, Publishing, and the Public**



TOWNSEND CENTER FOR THE HUMANITIES

6 p.m. | Maude Fife Room,
315 Wheeler Hall

Dr. Lisbet Rausing is a Senior Research Fellow at Imperial College's Centre for the History of Science, Technology and Medicine. She is also the founder of the Arcadia Fund, which since 2001 has made grant commitments of over \$181 million to preserve endangered treasures of culture and nature. Dr. Rausing is the author of *Linnaeus: Nature and Nation* as well as numerous scholarly articles, including "Toward a New Alexandria," (*New Republic*, March 2010), which addresses the future of libraries and public access to scholarly resources.

Panel Discussion

Tuesday, April 10, 2012

4–6 p.m. | Geballe Room, 220 Stephens Hall

Rausing in discussion with Anthony Cascardi (Dean, Arts & Humanities), Carla Hesse (Dean, Social Sciences), AnnaLee Saxenian (Dean, School of Information), and Thomas Leonard (University Librarian).

Event Contact: 510-643-9670

L **The Desire To Be You: Competition, Reflexivity and Desire in the Panegyrici Latini**

LATE ANTIQUE RELIGIONS ET SOCIETIES WORKING GROUP

12:30–2 p.m. | 370 Dwinelle Hall

Speaker: Dr. Marco Formisano, Wissenschaftlicher Mitarbeiter, Humboldt-Universität zu Berlin

Event Contact: jwt@berkeley.edu

L **Nuclear Proliferation: What's to Worry About?**

INSTITUTE OF INTERNATIONAL STUDIES

4–5:30 p.m. | 223 Moses Hall

Speaker:
Ambassador
Robert Gallucci,
President, The
John D. and
Catherine T.
MacArthur
Foundation



Event Contact: 510-642-2472

L **The Untimely Dialectic: Nietzsche, Plotinus, Hegel**

DEPARTMENT OF ENGLISH

5–7 p.m. | Maude Fife Room,
315 Wheeler Hall

Speaker: Andrew Cole, English,
Princeton University

Event Contact: rdperry@berkeley.edu

L **Chinese Miners, the "Coolie" Question, and the Propaganda of History**

CENTER FOR RACE AND GENDER

5:30–8 p.m. | 370 Dwinelle Hall

Speaker: Mae M. Ngai, Professor of History
and Lung Family Professor of Asian
American Studies, Columbia University

Event Contact: 510-643-8488

EVENT KEY

- F** FILM
- E** EXHIBITIONS
- P** PERFORMANCES
- L** CONFERENCES, LECTURES, AND READINGS

L Preston Scott Cohen

CED Lecture Series

COLLEGE OF ENVIRONMENTAL DESIGN

6:30–7:30 p.m. | 112 Wurster Hall

Speaker Preston Scott Cohen is the founding Principal of Preston Scott Cohen, Inc., and Chair of the Department of Architecture and the Gerald M. McCue Professor of Architecture at Harvard University Graduate School of Design.

Event Contact: 510-664-4442

TUESDAY, APRIL 10

L Religious Revivalism in Current North China

INSTITUTE OF EAST ASIAN STUDIES

12–1 p.m. | Institute of East Asian Studies, 2223 Fulton

Speaker: Shin-yi Chao, Philosophy and Religion, Rutgers University

Event Contact: 510-642-2809

L Ron Silliman

Holloway Series in Poetry



DEPARTMENT OF ENGLISH

6:30–8 p.m. | Maude Fife Room, 315 Wheeler Hall

Ron Silliman attended UC Berkeley in 1970–71, receiving the Joan Lee Yang Award. Since wandering off in the middle of his senior year to perform "alternative service" as a conscientious objector, he has written and edited over 30 books, most recently *Wharf Hypothesis* from Lines Press.

Event Contact: rosam@berkeley.edu

L The New Industrial Revolution



INTERNATIONAL HOUSE

7:30–9 p.m. | International House

Chris Anderson, Editor-in-Chief of *Wired Magazine*, will discuss a new form of entrepreneurship. People are applying online social and innovation models to DIY "small batch" manufacturing, leading to what Mr. Anderson calls "the continuing industrialization of the Maker Movement."

Tickets required.

Event Contact: 510-642-9460

WEDNESDAY, APRIL 11

P Eco Ensemble, Berkeley New Music Project

Noon Concert Series



Photo by Peg Skorpinsky

DEPARTMENT OF MUSIC

12:15–1 p.m. | Hertz Concert Hall

Lily Chen: *Soundscape* for violin, percussion, and piano

Andrés Cremisini: (*control*) for violin, cello, and snare drum

Event Contact: 510-642-4864

L Tolerance Without Liberalism: Islamic Institutions and Political Violence in 20th Century Indonesia

CENTER FOR SOUTHEAST ASIA STUDIES

12:30–2 p.m. | Institute of East Asian Studies, 2223 Fulton

Speaker: Jeremy Menchik, Shorenstein Postdoctoral Fellow in Contemporary Asia, Stanford University

Event Contact: 510-642-3609

L The Bathtub and the Hair Dryer: Exploring the Water-Energy Nexus

COLLEGE OF ENVIRONMENTAL DESIGN

1–2 p.m. | 315A Wurster Hall

Speaker: Andrew Fahlund, Executive Director, Water in the West, Stanford University

Event Contact: abl@berkeley.edu

L Arcade Hoange (d. 1716) and the Invention of Chinese Belles Lettres in Europe

CENTER FOR CHINESE STUDIES

4–6 p.m. | Institute of East Asian Studies, 2223 Fulton

Speaker: Patricia Sieber, East Asian Languages and Literatures, Ohio State University

Event Contact: 510-643-6321

L Gender, Crime and Feminist Theory: Masculinities' Effects on Violence Against Women and Men

INSTITUTE FOR THE STUDY OF SOCIETAL ISSUES

4–5:30 p.m. | Wildavsky Conference Room, Anna Head Building, 2538 Channing Way

Speaker: Lynn Chancer, Professor of Sociology, Hunter College of the City University of New York

Event Contact: 510-642-0813

L Building Government IT 2.0: A Personal Account of My Experiences as Chief IT Strategist for a U.S. Federal Agency

SCHOOL OF INFORMATION

4:10–5:30 p.m. | 210 South Hall

Speaker: Marti Hearst

Event Contact: 510-642-1464

WEDNESDAY, APRIL 11 (CONT'D)

L Digital Occupation: Israel's Military Occupation and the Digital Turn

DEPARTMENT OF GEOGRAPHY

4:10–5 p.m. | 575 McCone Hall

Speaker: Rebecca Stein, Anthropology Department, Duke University

Event Contact: 510-642-3903

L Death and the Ancient Philosophers

Howison Lectures in Philosophy

GRADUATE DIVISION

4:10 p.m. | Toll Room, Alumni House

Speaker: Jonathan Barnes, Ancient Philosophy, Paris Sorbonne University

Event Contact: 510-643-7413



L Repatriation and Rediscovery of Local Narratives through Music: Recordings and Films of Bali, 1928–1930s

Colloquia in the Musicologies Series

DEPARTMENT OF MUSIC

5–7 p.m. | Elkus Room, 125 Morrison

Speaker: Edward Herbst, Anthropology, Hunter College-CUNY

Event Contact: 510-642-2678

L Big History – A Bridge between Humanities and Sciences

R. Lowry Dobson Memorial Lecture

COLLEGE OF LETTERS & SCIENCE

5:30–6:30 p.m. | Sibley Auditorium, Bechtel Engineering Center

Speaker: Walter Alvarez, Geology, UC Berkeley

Event Contact: 510-642-3353

EVENT KEY

- F** FILM
- E** EXHIBITIONS
- P** PERFORMANCES
- L** CONFERENCES, LECTURES, AND READINGS

THURSDAY, APRIL 12

L Prospects: A New Century: Biennial Meeting of C19/The Society of Nineteenth-Century Americanists

DEPARTMENT OF ENGLISH

9 a.m.–6:30 p.m. | Berkeley City Club

The conference seeks to develop innovative methodologies for the intra- and interdisciplinary study of the long American nineteenth century (1789–1914).

Event Contact: tamarkin@berkeley.edu

L Vexed Histories: Rethinking Trajectories of Black Studies, Ethnic Studies, and Women's Studies

CENTER FOR RACE AND GENDER

4–5:30 p.m. | 691 Barrows Hall

Speakers: Ziza Delgado, Ethnic Studies, UC Berkeley; Nick Mitchell, African American Studies, UC Berkeley

Event Contact: 510-643-8488

L Story Hour in the Library featuring Isabel Allende



THE LIBRARY

6–7 p.m. | Morrison Room, 101 Doe Library

Isabel Allende is the acclaimed author of 19 books, which have been translated into 35 languages. In addition to her career as writer, journalist, and teacher, she has created the Isabel Allende Foundation to empower women and girls worldwide.

Event Contact: 510-643-0397

P Cine/Spin: Totally Surreal, Totally



BERKELEY ART MUSEUM

7:30 p.m. | Pacific Film Archive Theater

Cal DJs take on films from the PFA collection, spinning solo or team-tampering with an ever-changing array of silent and silenced works.

Tickets required.

Event Contact: 510-642-1412

FRIDAY, APRIL 13

L Prospects: A New Century: Biennial Meeting of C19/The Society of Nineteenth-Century Americanists

DEPARTMENT OF ENGLISH

9 a.m.–6:30 p.m. | Berkeley City Club

See Thursday, April 12 listing for details.

L Legal Regimes and Legal Change in Antiquity

DEPARTMENT OF CLASSICS

10 a.m.–5:30 p.m. | 370 Dwinelle Hall

A two-day conference.

Event Contact: azbryen@berkeley.edu

L The Little Book of Terror

CENTER FOR SOUTH ASIA STUDIES

12–2 p.m.

10 Stephens Hall

Speaker: Daisy Rockwell, artist and writer

Event Contact: 510-642-3608



P Chamber Music

Noon Concert Series

DEPARTMENT OF MUSIC

12:15–1 p.m. | Hertz Concert Hall

Event Contact: 510-642-4864

L Berkeley-Stanford Graduate Student Conference in Modern Chinese Humanities



CENTER FOR CHINESE STUDIES

2–5:30 p.m. | Institute of East Asian Studies, 2223 Fulton

This annual conference brings together graduate students to present innovative research on many aspects of modern Chinese cultural production in humanistic disciplines.

Event Contact: 510-643-6321

L Alan Shockley

Composition Colloquia Series

DEPARTMENT OF MUSIC

3–4:30 p.m. | 128 Morrison Hall

Event Contact: 510-642-2678

L On the Legacy of Socialist Visual Experience

CENTER FOR CHINESE STUDIES

4–5:30 p.m. | Institute of East Asian Studies, 2223 Fulton

Speaker:
Xiaobing Tang,
Comparative
Literature,
University of
Michigan

Event Contact:
510-643-6321



L Poetry Reading

DEPARTMENT OF SPANISH & PORTUGUESE

7–9 p.m. | Geballe Room, 220 Stephens Hall

Poetry reading in English, Spanish, and Portuguese, featuring poet María Negroni, as well as readings by Suzanne Jill Levine and graduate students from the Departments of Spanish & Portuguese and English.

Event Contact: jbecker@berkeley.edu

P Amy X Neuburg

L@TE: Friday Nights at BAM/PFA



BERKELEY ART MUSEUM

7:30–10 p.m. | Berkeley Art Museum

Neuburg, who has “scoped out her own territory in the gulf between pop and classical” (*Village Voice*), is joined by wild percussionist Moe! Staiano and a large chorus for an evening of wordless and nearly wordless songs.

Event Contact: 510-642-0808

P UC Berkeley Chamber Chorus, La Chanson

DEPARTMENT OF MUSIC

8–10 p.m. | Hertz Concert Hall

Matthew Oltman, guest director

Tickets required.

Event Contact: 510-642-4864

P Quatuor Mosaïques

CAL PERFORMANCES

8 p.m. | First Congregational Church

Pre-performance talk at 7 p.m. by musicologist Victor Gavenda.

Tickets required.

Event Contact: 510-642-9988

SATURDAY, APRIL 14

L Schismatics: Annual Berkeley-Stanford Graduate Student Conference

DEPARTMENT OF ENGLISH

10 a.m.–7 p.m. | Third Floor, Wheeler Hall

An annual conference showcasing the best work from graduate students in the humanities departments of Berkeley and Stanford.

Event Contact:

berkeleystanfordconference2012@gmail.com

L Prospects: A New Century: Biennial Meeting of C19/The Society of Nineteenth-Century Americanists

DEPARTMENT OF ENGLISH

9 a.m.–6:30 p.m. | Berkeley City Club

See Thursday, April 12 listing for details.

L Legal Regimes and Legal Change in Antiquity

DEPARTMENT OF CLASSICS

10 a.m.–5:30 p.m. | 370 Dwinelle Hall

See Friday, April 13 listing for details.

P University Gospel Chorus



DEPARTMENT OF MUSIC

8–10 p.m. | Hertz Concert Hall

Experience the spirit of gospel and jazz improvisations, as gospel meets jazz and big band in this performance of Duke Ellington’s “Sacred Concert” (excerpts), with guest artists from UC & the community.

Tickets required.

Event Contact: 510-642-4864

SUNDAY, APRIL 15

L Faces of Poverty: Exploring Stigmas, Exploring the Marginalized

SUITCASE CLINIC

9 a.m.–4 p.m. | Maude Fife Room, 315 Wheeler Hall

Fourth Annual Berkeley Poverty and Homelessness Symposium

Event Contact: 510-642-7811

L Prospects: A New Century: Biennial Meeting of C19/The Society of Nineteenth-Century Americanists

DEPARTMENT OF ENGLISH

9 a.m.–6:30 p.m. | Berkeley City Club
See Thursday, April 12 listing for details.

P E@RLY: The Sun (Part Two)

BERKELEY ART MUSEUM

12–2 p.m. | Berkeley Art Museum
Artist Chris Duncan leads a prism-making workshop, Bay Area sound artist McKelvey performs a sonic response to Paul Kos's piece *Sound of Ice Melting* and the International Orange Chorale sings in celebration of the fiery orb.

Event Contact: 510-642-0808

L State of Mind: New California Art circa 1970 Gallery Conversation

BERKELEY ART MUSEUM

3 p.m. | Berkeley Art Museum

Museum of Modern Art Chief Curator for Media and

Performance Art Sabine Breitwieser offers her response to *State of Mind: New California Art circa 1970* in a gallery conversation with exhibition co-curator Constance M. Lewallen.

Event Contact: 510-642-0808



EVENT KEY

- F** FILM
- E** EXHIBITIONS
- P** PERFORMANCES
- L** CONFERENCES, LECTURES, AND READINGS

P University Wind Ensemble

DEPARTMENT OF MUSIC

3–5 p.m. | Hertz Concert Hall

Higdon: *Road Stories*

Holsinger: *Scootin' on Hardrock*

Ticheli: *Loch Lomond*

Karrick: *Bayou Breakdown*

Tickets required.

Event Contact: 510-642-4864

MONDAY, APRIL 16

F Exit Through the Gift Shop (Banksy, 2010)

Depth of Field Film + Video Series



TOWNSEND CENTER FOR THE HUMANITIES

7 p.m. | Geballe Room, 220 Stephens Hall

Exit Through the Gift Shop focuses on Thierry Guetta, a French immigrant and aspiring filmmaker in Los Angeles who infiltrates the underground street art community and befriends the talented and elusive Banksy. As Guetta documents Banksy's exploits, he slowly establishes an artistic profile of his own as “Mr. Brainwash,” leaving the audience to wonder who is subject and who is filmmaker.

Event Contact: 510-643-9670

L The Role of Sport in Promoting Development and Peace: A Critical Sociological Analysis

CENTER FOR AFRICAN STUDIES

12–2 p.m. | Location TBA

Speaker: Richard Giulianotti, Professor of Sociology, School of Sport, Exercise and Health Sciences, Loughborough University

Event Contact: 510-642-8338

L Innovation and Transmission within the Eco-System of Balinese Wayang Performance

CENTER FOR SOUTHEAST ASIA STUDIES

12:30–2 p.m. | Institute of East Asian Studies, 2223 Fulton

Speaker: Lisa Gold, Music, UC Berkeley

Event Contact: 510-642-3609

L Linguistics Colloquium

DEPARTMENT OF LINGUISTICS

4:10–5:30 p.m. | 182 Dwinelle Hall

Speaker: Judith Kroll, Pennsylvania State University

Event Contact: 510-643-7621

L Media Bichos and other Displays for Engaging People to Watch Videos in the Museum

Art, Technology, and Culture Colloquium

BERKELEY CENTER FOR NEW MEDIA

7:30–9 p.m. | Banatao Auditorium, Sutardja Dai Hall

Speaker: Sabine Breitwieser, Chief Curator of Media and Performance Art, Museum of Modern Art, New York

Event Contact: 510-495-3505

TUESDAY, APRIL 17

L What Is China?

INSTITUTE OF EAST ASIAN STUDIES

12–1 p.m. | Institute of East Asian Studies, 2223 Fulton

Speaker: Xin Liu, Anthropology, UC Berkeley

Event Contact: 510-642-2809

L Islamophobia in France

INSTITUTE OF INTERNATIONAL STUDIES

12–2 p.m. | 223 Moses Hall

Speaker: Houria Bouteldja, Dialeq Global Institute, Paris

Event Contact: l.gerber@berkeley.edu

L Fundamentalism: Prophecy and Protest in an Age of Globalization

RELIGION, POLITICS, AND GLOBALIZATION PROGRAM

12–2 p.m. | 202 Barrows Hall

Speaker: Torkel Brekke, Oslo

Event Contact: l.gerber@berkeley.edu

L Gendering Food Justice

BEATRICE BAIN RESEARCH GROUP

4–5:30 p.m. | 370 Dwinelle Hall

Speakers: Patricia Allen, Director, Center for Agroecology and Sustainable Food Systems, UC Santa Cruz; Wendy Sarvasy, Political Science, Cal State East Bay

Event Contact: bbrg@berkeley.edu

L Happiness and Ultimate Good

Foerster Lectures on the Immortality of the Soul

GRADUATE DIVISION

4:10 p.m. | Toll Room, Alumni House

Speaker: Peter Singer, Bioethics, Princeton University

Event Contact: 510-643-7413



Photo by Andrew Wilkinson

L Vasudha Dalmia

CENTER FOR SOUTH ASIA STUDIES

5–7 p.m. | 10 Stephens Hall

Speaker: Vasudha Dalmia, Hindi and Modern South Asian Studies, UC Berkeley

Event Contact: 510-642-3608

L Blake Stimson

CONTEMPORARY ART WORKING GROUP

7–9 p.m. | 340 Moffitt Undergraduate Library

Speaker: Blake Stimson, Art History, UC Davis

Event Contact: jpsmith@berkeley.edu

WEDNESDAY, APRIL 18

L Tables of Content: Ray Johnson and Robert Warner Bob Box Archive/MATRIX 241

BERKELEY ART MUSEUM

12 p.m. | Berkeley Art Museum

Cultural historian Dickran Tashjian (Art History, UC Irvine) shares his insights into the work of Ray Johnson with reference to the culture of correspondence art, the social life of the American avant-garde, and the work of Joseph Cornell.

Event Contact: 510-642-0808

P Songs of Persephone

Noon Concert Series

DEPARTMENT OF MUSIC

12:15–1 p.m. | Hertz Concert Hall

Soprano Alana Mailes performs 17th-century Italian and French opera arias and cantatas by Caccini, Peri, Monteverdi, Rossi, Lully, Charpentier.

Event Contact: 510-642-4864



L Case studies from the Colorado River and French Prealps

COLLEGE OF ENVIRONMENTAL DESIGN

1–2 p.m. | 315A Wurster Hall

Speaker: Zan Rubin, Landscape Architecture and Environmental Planning, UC Berkeley

Event Contact: abl@berkeley.edu

L Hell and the Future: Stereotyping by Destiny in Western Europe around 1000

LATE ANTIQUE RELIGIONS ET SOCIETIES WORKING GROUP

3–5 p.m. | Dwinelle Hall

Alan Bernstein (History, University of Arizona) will lead a workshop discussion on a portion of his project "On the History of Belief in Hell."

Event Contact: jwt@berkeley.edu

L Islamophobia in The Netherlands and Anti-Black Racism

INSTITUTE OF INTERNATIONAL STUDIES

4–6 p.m. | 223 Moses Hall

Speaker: Sandew Hiro, International Institute of Scientific Studies, Amsterdam

Event Contact: l.gerber@berkeley.edu

L "Masters of the Country": Grass-Roots in the First General Election

INSTITUTE OF EAST ASIAN STUDIES

4 p.m. | Institute of East Asian Studies, 2223 Fulton

Speaker: Jishun Zhang, Si-mian Institute for Advanced Studies in Humanities, East China Normal University

The lecture will be in Chinese.

Event Contact: 510-642-2809

L Net Smart: How to Thrive Online

SCHOOL OF INFORMATION

4:10–5:30 p.m. | 210 South Hall

Speaker: Howard Rheingold, author

Event Contact: 510-642-1464

L A 2nd-Century BC Shipwreck in the Indian Ocean and the Role of the Bodhisattva Avalokite vara as the Protector of Mariners

DEPARTMENT OF HISTORY OF ART

5:15–6:30 p.m. | 308J Doe Library

Speaker: Osmund Bopearachchi, History of Art, UC Berkeley

Event Contact: astewart@berkeley.edu

THURSDAY, APRIL 19

L Making Time

ARTS RESEARCH CENTER

9 a.m.–5 p.m. | Berkeley Art Museum

Scholars, artists, presenters, and curators will come together in this arts symposium to think about what it means to make, curate, and evaluate hybrid art practices.

Event Contact: 510-642-7784

THURSDAY, APRIL 19 (CONT'D)

L **Manuel Lozada's Indigenous Rebellion: A 19th Century Tale of Capital, Race, and the Struggle over Territory in Mexico**
BANCROFT LIBRARY

12–1 p.m. | Lewis-Latimer Room, Faculty Club

Speaker: Diana Negrin da Silva, Geography, UC Berkeley, Bancroft Study Award Recipient

Event Contact: 510-642-3782

L **I'm Neither Here nor There: Mexicans' Quotidian Struggles with Migration and Poverty**
INSTITUTE FOR THE STUDY OF SOCIETAL ISSUES

4–5:30 p.m. | Shorb House, 2547 Channing Way

Speaker: Patricia Zavella, Latin American and Latino Studies, UC Santa Cruz

Event Contact: 510-642-6903

L **Retrieved Atlantis: Photographic Memories of a Disappeared Algerian Village**
CENTER FOR MIDDLE EASTERN STUDIES

5 p.m. | 340 Stephens Hall

Speaker: Slimane Zeghidour, author & journalist, TV5 Monde, France

Event Contact: cmes@berkeley.edu

F **Cave of Forgotten Dreams (Werner Herzog, 2010)**

DEPARTMENT OF GERMAN

6:30–8:30 p.m. | B4 Dwinelle Hall

Screening by the German Film Club.

Event Contact: 510-643-2004

FRIDAY, APRIL 20

L **Annual International Conference on Islamophobia**

CENTER FOR RACE AND GENDER

9 a.m.–5 p.m. | Boalt Hall, School of Law

Organized by the CRG Islamophobia Research & Documentation Project.

Event Contact: 510-643-8488

L **Towards Long-term Sustainability: In Response to the Fukushima Nuclear Disaster**
CENTER FOR JAPANESE STUDIES

9 a.m.–5 p.m. | Institute of East Asian Studies, 2223 Fulton

Event Contact: 510-642-3156

L **Making Time**

ARTS RESEARCH CENTER

9 a.m.–5 p.m. | Berkeley Art Museum

See Thursday, April 19 listing for details.

L **Larry May**

KADISH CENTER FOR MORALITY, LAW, AND PUBLIC AFFAIRS

11:20 a.m.–1 p.m. | 132 Boalt Hall South

Larry May is a political philosopher who has written on conceptual issues in collective and shared responsibility, as well as normative issues in international criminal law.

RSVP required.

Event Contact: 510-642-3627

L **Eric Chasalow**

Composition Colloquia Series

DEPARTMENT OF MUSIC

3–4:30 p.m. | Elkus Room, 125 Morrison Hall

Event Contact: 510-642-2678

F **A Sea Change (Barbara Ettinger, 2009)**



DEPARTMENT OF LANDSCAPE ARCHITECTURE & ENVIRONMENTAL PLANNING

4–6 p.m. | 112 Wurster Hall

Learn about how the changing sea water chemistry is affecting our planet.

Event Contact: 626-716-8919

L **Interrelationships that Musicians Nurture in Four Musical Communities**

Colloquia of the Musicologies

DEPARTMENT OF MUSIC

4:40–6 p.m. | 128 Morrison Hall

Speaker: Eric Charry, Music, Wesleyan University

Event Contact: 510-642-2678

P **Berkeley Dance Project 2012: Beneath the Flesh**

DEPARTMENT OF THEATER, DANCE & PERFORMANCE STUDIES

8 p.m. | Zellerbach Playhouse

With works by Amara Tabor-Smith, Lisa Wymore, and Stephanie Sherman.

Directed by Lisa Wymore.

Tickets required.

Event Contact: 510-642-8827



Photo by Anna Marie Panlilio

EVENT KEY

- F** FILM
- E** EXHIBITIONS
- P** PERFORMANCES
- L** CONFERENCES, LECTURES, AND READINGS

SATURDAY, APRIL 21

L Annual International Conference on Islamophobia

CENTER FOR RACE AND GENDER

9 a.m.–5 p.m. | Boalt Hall, School of Law
See Friday, April 20 listing for details.

L Towards Long-term Sustainability: In Response to the Fukushima Nuclear Disaster

CENTER FOR JAPANESE STUDIES

9 a.m.–5 p.m. | Institute of East Asian Studies, 2223 Fulton
See Friday, April 20 listing for details.

L Making Time

ARTS RESEARCH CENTER

9 a.m.–5 p.m. | Berkeley Art Museum
See Thursday, April 19 listing for details.

P Cal Day Music Performances

DEPARTMENT OF MUSIC

11 a.m.–4 p.m. | Hertz Concert Hall
Milhaud: *Cinéma-Fantaisie*, Joe Neeman, violin
Chausson: *Poème*, Casey Nosiglia, violin
Saint-Saëns: *Violin Concerto No. 3*, Wooho Park, violin
Liszt: *Totentanz*, Lisa Wu, piano
Tickets required.
Event Contact: 510-642-4864

P University Chorus

DEPARTMENT OF MUSIC

8–10 p.m. | Hertz Concert Hall
Janequin: *La guerre*
Jerusalem: *Polychoral Mass in F* (modern premiere)
Handel: *Utrecht Jubilate and Zadok the Priest* (with orchestra)
Tickets required.
Event Contact: 510-642-4864

P Berkeley Dance Project 2012: Beneath the Flesh

DEPARTMENT OF THEATER, DANCE & PERFORMANCE STUDIES

8 p.m. | Zellerbach Playhouse
See Friday, April 20 listing for details.

SUNDAY, APRIL 22

P Berkeley Dance Project 2012: Beneath the Flesh

DEPARTMENT OF THEATER, DANCE & PERFORMANCE STUDIES

2 p.m. | Zellerbach Playhouse
See Friday, April 20 listing for details.

P Marcel Khalife and Al Mayadine Ensemble in Concert: "Fall of the Moon": An Homage to the Poet Mahmoud Darwish and a Salute to the Arab Spring



CENTER FOR MIDDLE EASTERN STUDIES

7 p.m. | Zellberach Auditorium, Zellerbach Hall
Poetry of Mahmoud Darwish and music of Marcel Khalife.
Tickets required.
Event Contact: 510-394-2417

MONDAY, APRIL 23

L Martha Welborne

CEC Lecture Series

COLLEGE OF ENVIRONMENTAL DESIGN

6:30–7:30 p.m. | 112 Wurster Hall
Speaker: Martha Welborne, Executive Director of Countywide Planning, Los Angeles County Metropolitan Transportation Authority
Event Contact: 510-664-4442

L Double Feature: Performing Digital Choreography

Art, Technology, and Culture Colloquium



BERKELEY CENTER FOR NEW MEDIA

7:30–9 p.m. | Banatao Auditorium, Sutardja Dai Hall
Speaker: Jonah Bokaer, choreographer
Event Contact: 510-495-3505

L John Zurier

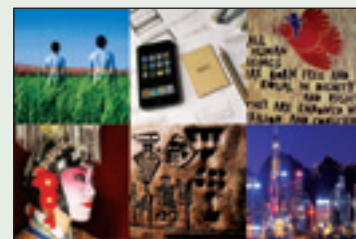
Visiting Artist Lecture Series

DEPARTMENT OF ART PRACTICE

7:30 p.m. | 160 Kroeber Hall
Speaker: John Zurier, painter
Event Contact: 510-643-7064

TUESDAY, APRIL 24

L Course Threads Symposium



TOWNSEND CENTER FOR THE HUMANITIES

4 p.m. | Geballe Room, 220 Stephens Hall
The Course Threads symposium is a capstone forum for students who have completed all requirements of the Course Threads Program. Students will present on the topics they studied within their thread, discussing the ways in which interdisciplinary course work informed their knowledge of the topic.
<http://coursethreads.berkeley.edu>
Event Contact: 510-643-9670

TUESDAY, APRIL 24 (CONT'D)

L Social Policy and Healthy Aging among Older Chinese Immigrants in the United States, Sweden, and Japan

INSTITUTE OF EAST ASIAN STUDIES

12–1 p.m. | Institute of East Asian Studies, 2223 Fulton

Speaker: Kazumi Hoshino, Visiting Scholar, Center for Japanese Studies, UC Berkeley

Event Contact: 510-642-2809

L Shamans, Buddhists and Muslim Saints: The Layered History of the Desert Mazar

CENTER FOR BUDDHIST STUDIES

3–7 p.m. | Institute of East Asian Studies, 2223 Fulton

A symposium on the historical and contemporary religious landscape of Xinjiang and the Uighur Autonomous Region.



Event Contact: 510-643-5104

F The Other Half (Ying Liang, 2006)

I-House Film Series

INTERNATIONAL HOUSE

7–9 p.m. | Chevron Auditorium, International House

Working as a secretary for a legal office, Xiaofen records the sordid aspects of clients' lives. She begins to question her relationship with her boyfriend fresh out of prison and looking to get into trouble again.

Tickets required.

Event Contact: 510-642-9460

EVENT KEY

- F** FILM
- E** EXHIBITIONS
- P** PERFORMANCES
- L** CONFERENCES, LECTURES, AND READINGS

WEDNESDAY, APRIL 25

L Urban Water and Sanitation: Paradigms for the 21st Century South Asian City

CENTER FOR SOUTH ASIA STUDIES

8:30 a.m.–3 p.m. | B-100 Blum Hall

A Graduate Student Pre-conference to the 21st Century Indian City.

Event Contact: 510-642-3608

P Gamelan Music of Java and Bali

Elizabeth Elkus Memorial Noon Concert



DEPARTMENT OF MUSIC

12:15–1 p.m. | Hertz Concert Hall

Gamelan Music of Java and Bali is performed by classes directed by Midiyanto and I Dewa Putu Berata with Ben Brinner and Lisa Gold.

Event Contact: 510-642-4864

L "I Sold My Blood A Billion Times": Constructing Urban Poverty in Contemporary Vietnam

CENTER FOR SOUTHEAST ASIA STUDIES

12:30–2 p.m. | Institute of East Asian Studies, 2223 Fulton

Speaker: Martha Lincoln, Anthropology, City University of New York

Event Contact: 510-642-3609

L Water Conservation and Reuse Strategies

COLLEGE OF ENVIRONMENTAL DESIGN

1–2 p.m. | 315A Wurster Hall

Speaker: Elizabeth Dougherty, Principal, Wholly H2O

Event Contact: abl@berkeley.edu

L On Being an Academic Parent

Program on Academic Lives



WOMEN'S FACULTY CLUB

4 p.m. | Women's Faculty Club

Professors Emeriti Paula Fass and Mary Ann Mason discuss their recent book, *Childhood in America*.

Event Contact: 510-642-4175

L Chinese Archives Seminar



INSTITUTE OF EAST ASIAN STUDIES

4 p.m. | Institute of East Asian Studies, 2223 Fulton

Speaker: Jishun Zhang, Si-mian Institute for Advanced Studies in Humanities, East China Normal University

The lecture will be in Chinese.

Event Contact: 510-642-2809

L Three Worlds of Relief: Race, Immigration and the American Welfare State from the Progressive Era to the New Deal

INSTITUTE FOR THE STUDY OF SOCIETAL ISSUES

4–5:30 p.m. | Wildavsky Conference Room, Anna Head Building, 2538 Channing Way

Speaker: Cybelle Fox, Sociology, UC Berkeley

Event Contact: 510-642-0813

L New Archaic Sculptures from the Sacred Gate of the Athenian Kerameikos

DEPARTMENT OF HISTORY OF ART

5–6:30 p.m. | 308J Doe Library

Speaker: Wolf-Dietrich Niemeier, Director, German Archaeological Institute in Athens

Event Contact: astewart@berkeley.edu

L New Discoveries in the Oracular Sanctuary of Apollo at Abai (Kalapodi) in Phokis

THE GRADUATE GROUP IN ANCIENT HISTORY & MEDITERRANEAN ARCHAEOLOGY

2–4 p.m. | 370 Dwinelle Hall

Speaker: Wolf-Dietrich Niemeier, Director, German Archaeological Institute in Athens

Event Contact: astewart@berkeley.edu

L The Mugging of Main Street in America: Implications for the World

INTERNATIONAL HOUSE

7:30–9 p.m.

International House

Speaker: Robert Scheer, Editor-in-Chief of Truthdig.com

Event Contact: 510-642-9460



THURSDAY, APRIL 26

L Swinging and Flowing: Inclusion and Diversity in the Age of Data

CITRIS

9:30 a.m.–7 p.m. | Banatao Auditorium, Sutardja Dai Hall

A conference for media professionals, app developers, academics and students exploring the confluence of diversity and new media technologies. With presentations by Helen Milner and DJ Spooky.

Tickets required.

Event Contact: 510-643-2217

L The Myth of Religious Violence

RELIGION, POLITICS, AND GLOBALIZATION PROGRAM

3:30–5:30 p.m. | 223 Moses Hall

Speaker: Bill Cavanaugh, DePaul University

Event Contact: lgerber@berkeley.edu

L Memory and Community in Early Southern Song

CENTER FOR CHINESE STUDIES

4–6 p.m. | Institute of East Asian Studies, 2223 Fulton

Speaker: Stephen West, Languages and Literatures, Arizona State University

Event Contact: 510-643-6321

FRIDAY, APRIL 27

L Cultural Geographies of 1960s Japan: Cinema, Music + Arts

CENTER FOR JAPANESE STUDIES

9 a.m.–5 p.m. | Location TBA

See Thursday, April 26 listing for details.

L Digital Inquiry: Forms of Knowledge in the Age of New Media

BERKELEY CENTER FOR NEW MEDIA

9 a.m.–5 p.m. | Banatao Auditorium, Sutardja Dai Hall

A symposium bringing together interdisciplinary scholars, artists, and media industry representatives to reflect on the nature of knowledge in the digital age.

Event Contact: 510-495-3505

L Cultural Geographies of 1960s Japan: Cinema, Music + Arts



CENTER FOR JAPANESE STUDIES

9 a.m.–5 p.m. | Location TBA

A symposium taking concerns of cultural geography as a model (or metaphor) for a way of thinking the "landscape" of art- and film-making in the 1960s Tokyo counterculture.

Event Contact: 510-642-3156

L The Arab Uprisings: Youth, Technology, and Human Rights

CENTER FOR MIDDLE EASTERN STUDIES

5 p.m. | 340 Stephens Hall

Speaker: Mahmood Monshipouri, International Relations, San Francisco State University

Event Contact: cmes@berkeley.edu

L History and Theory of New Media: Tactical Media

BERKELEY CENTER FOR NEW MEDIA

5–6 p.m. | 370 Dwinelle Hall

Speaker: Rita Raley, UC Santa Barbara

Event Contact: 510-495-3505

L Occupy Gdansk! Revolutionary Practices in the Contemporary World

INSTITUTE OF SLAVIC, EAST EUROPEAN, AND EURASIAN STUDIES

12–1:30 p.m. | 270 Stephens Hall

Speaker: Padraic Kenney, History, Indiana University

Event Contact: 510-642-9107

L The Edges of Exposure: A Graduate Student Conference

DEPARTMENT OF FRENCH

1–6:30 p.m. | 370 Dwinelle Hall

A conference bringing together scholars from a variety of disciplines to explore exposure as articulated in French and Francophone intellectual and cultural production.

Event Contact: mhevans@berkeley.edu

FRIDAY, APRIL 27 (CONT'D)

L Spring 2012 BLC Fellows Instructional Development Research Projects

BERKELEY LANGUAGE CENTER

3–5 p.m. | B4 Dwinelle Hall

Speakers: Daniel A. Brooks (Slavic Languages & Literatures), Jonathan Haddad (French), and Jennifer Johnson (Graduate School of Education)

Event Contact: 510-877-4002

L Nathan Davis

Composition Colloquia Series

DEPARTMENT OF MUSIC

3–4:30 p.m. | Elkus Room,
125 Morrison Hall

Event Contact: 510-642-2678

P University Baroque Ensemble

DEPARTMENT OF MUSIC

8–10 p.m. | Hertz Concert Hall

Music of Bach, Corelli, Legrenzi,
and Purcell.

Tickets required.

Event Contact: 510-642-4864

P Berkeley Dance Project 2012: *Beneath the Flesh*

DEPARTMENT OF THEATER, DANCE
& PERFORMANCE STUDIES

8 p.m. | Zellerbach Playhouse

See Friday, April 20 listing for details.

SATURDAY, APRIL 28

L Aboriginal Self-Governance in North America: Dreams and Realities since 1970

CANADIAN STUDIES PROGRAM

8:30 a.m.–5:30 p.m. | Gifford Room,
221 Kroeber Hall

Event Contact: 510-642-0531

EVENT KEY

- F** FILM
- E** EXHIBITIONS
- P** PERFORMANCES
- L** CONFERENCES, LECTURES, AND READINGS

L American Musicological Society Joint Chapter Meeting

DEPARTMENT OF MUSIC

9 a.m. | 125 Morrison Hall

The joint meeting of the Northern California and Pacific Southwest Chapters of the American Musicological Society will feature 30-minute papers on varied subjects of musicological interest as well as an education roundtable.

Event Contact: 510-691-2446

P Gamelan Sari Raras: Javanese Shadow Play

DEPARTMENT OF MUSIC

8–10 p.m. | Hertz Concert Hall

Javanese wayang (shadow play) featuring puppet master Midiyanto.

Tickets required.

Event Contact: 510-642-4864

P Berkeley Dance Project 2012: *Beneath the Flesh*

DEPARTMENT OF THEATER, DANCE
& PERFORMANCE STUDIES

8 p.m. | Zellerbach Playhouse

See Friday, April 20 listing for details.

SUNDAY, APRIL 29

L American Musicological Society Joint Chapter Meeting

DEPARTMENT OF MUSIC

9 a.m. | 125 Morrison Hall

See Saturday, April 28 listing for details.

L Philosophy Talk

STANFORD UNIVERSITY

12 p.m. | Marsh Theater, 2120 Allston Way,
Berkeley

Identities Lost & Found in a Global Age
Bharati Mukherjee, English, UC Berkeley

Hypocrisy

Lawrence Quill, Political Science, San Jose State University

Tickets required.

Event Contact: 650-724-7193

L Women, Work, Role-Playing Contemporary Practices

BERKELEY ART MUSEUM

2 p.m. | Berkeley Art Museum

Two panel discussions in conjunction with *State of Mind: New California Art circa 1970*. Chaired by Associate Professor Julia Bryan-Wilson (UC Berkeley), artists Lynn Hershman, Suzanne Lacy, Bonnie Sherk, and art historian Moira Roth.

Event Contact: 510-642-0808

P Berkeley Dance Project 2012: *Beneath the Flesh*

DEPARTMENT OF THEATER, DANCE
& PERFORMANCE STUDIES

2 p.m. | Zellerbach Playhouse

See Friday, April 20 listing for details

MONDAY, APRIL 30

L Changing Perspectives on the Indus Civilization: New Insights from Excavations in Pakistan and India

DEPARTMENT OF ANTHROPOLOGY

12:10–1:30 p.m. | 101 Archaeological
Research Facility, 2251 College

Speaker: J. Mark Kenoyer, Anthropology,
University of Wisconsin

Event Contact: 510-642-2212

L “Strange Tales of the Electric Art”: Hypnotism and the Literary Imagination in Early Twentieth-Century China



CENTER FOR CHINESE STUDIES

4–6 p.m. | Institute of East Asian Studies,
2223 Fulton

Speaker: Tie Xiao, CCS Postdoctoral Fellow

Event Contact: 510-643-6321

L **Five Centuries of Etruscan Tomb Painting (700 - 200 BC): New Discoveries, Research, and Approaches**



DEPARTMENT OF HISTORY OF ART

5–7 p.m. | Banatao Auditorium, Sutardja Dai Hall

Speaker: Stephan Steingräber, Etruscology and Italic Antiquities, Roma Tre University, Rome

Event Contact: cerveteri@gmail.com

TUESDAY, MAY 1

L **Displacements: The Politics of Liberation and the Displacement of Time**

INSTITUTE OF INTERNATIONAL STUDIES

4–6 p.m. | 223 Moses Hall

Speaker: Alejandro Vallegas, University of Oregon

Event Contact: l.gerber@berkeley.edu

P **2012 BAM/PFA Gala: Honoring Cissie Swig**

BERKELEY ART MUSEUM

6 p.m. | Berkeley Art Museum

Gala honoring Roselyne “Cissie” Swig for her unlimited enthusiasm and commitment to the museum, as well as to so many outstanding local and national arts and cultural institutions.

Tickets required.

Event Contact: 510-642-7496

F **Checkpoint (Yoav Shamir, 2003)**



CENTER FOR MIDDLE EASTERN STUDIES

7 p.m. | Chevron Auditorium, International House

A film documenting the power dynamics at play at the Israeli checkpoints that Palestinians must pass through in the course of their daily lives, as well as the destructive impact of the occupation on both societies.

Event Contact: cmes@berkeley.edu

L **Constance Lewallen**

CONTEMPORARY ART WORKING GROUP

7–9 p.m. | 340 Moffitt Library

Speaker: Constance Lewallen, Curator, Berkeley Art Museum

Event Contact: jpsmith@berkeley.edu

WEDNESDAY, MAY 2

L **Petitioning Beijing: The High Tide of 2003-06**

INSTITUTE OF EAST ASIAN STUDIES

12–1 p.m. | Institute of East Asian Studies, 2223 Fulton

Speaker: Kevin O'Brien, Political Science, UC Berkeley

Event Contact: 510-642-2809

L **Renaissance Music, A Cappella**

Noon Concert Series

DEPARTMENT OF MUSIC

12:15–1 p.m. | Hertz Concert Hall

Mark Sumner, director

Event Contact: 510-642-4864

L **Localized Sanctity and Sanctified Locations**

LATE ANTIQUE RELIGIONS ET SOCIETIES WORKING GROUP

5–7 p.m. | Stephens Hall

Speaker: Kathryn Jasper, History, UC Berkeley

Event Contact: jwt@berkeley.edu

THURSDAY, MAY 3

P **Directors' Showcase**

DEPARTMENT OF THEATER, DANCE & PERFORMANCE STUDIES

8 p.m. | Durham Studio Theater, Dwinelle Hall

A showing of scenes by students in the TDPS Stage Directing class.

Event Contact: 510-642-8827

L **Lunch Poems Presents Student Reading**

THE LIBRARY

12:10–12:50 p.m. | Morrison Room, 101 Doe Library

One of the year's most lively events, the student reading includes winners of the following prizes: Academy of American Poets, Cook, Rosenberg, and Yang, as well as students nominated by Berkeley's creative writing faculty, Lunch Poems volunteers, and representatives from student publications.

Event Contact: poems@library.berkeley.edu

L **Regulating Informality: Worker Centers and Day Labor**

INSTITUTE FOR THE STUDY OF SOCIETAL ISSUES

4–5:30 p.m. | Shorb House, 2547 Channing Way

Speaker: Abel Valenzuela, Professor and Chair, Chicano and Chicana Studies, UCLA

Event Contact: 510-642-6903

THURSDAY, MAY 3 (CONT'D)

L Islamic Publishing Houses in the Course of Transformation: The Role of Translation

CENTER FOR MIDDLE EASTERN STUDIES

5 p.m. | 340 Stephens Hall

Speaker: Elif Daldeniz, Translation Studies, Okan University, Istanbul, Turkey

Event Contact: cmes@berkeley.edu

P Awards Celebration and Gala Honoring Joan Baez

INTERNATIONAL HOUSE

6–8:30 p.m. | Chevron Auditorium, International House

Tickets required.

Event Contact: 510-642-4128

FRIDAY, MAY 4

P Directors' Showcase

DEPARTMENT OF THEATER, DANCE & PERFORMANCE STUDIES

8 p.m. | Durham Studio Theater, Dwinelle Hall

See Thursday, May 3 listing for details.

L Robin Estrada

Composition Colloquia Series

DEPARTMENT OF MUSIC

3–4:30 p.m. | 128 Morrison Hall

Event Contact: 510-642-2678

L China: The Age of Ambition

CENTER FOR CHINESE STUDIES

5:30–7 p.m. | 105 North Gate Hall

Speaker: Evan Osnos, China Correspondent, *The New Yorker*

Event Contact: 510-643-6321

EVENT KEY

- F** FILM
- E** EXHIBITIONS
- P** PERFORMANCES
- L** CONFERENCES, LECTURES, AND READINGS

P UC Berkeley Symphony Orchestra



DEPARTMENT OF MUSIC

8–10 p.m. | Hertz Concert Hall

Mahler: *Symphony No. 9*

Tickets required.

Event Contact: 510-642-4864

SATURDAY, MAY 5

P UC Berkeley Symphony Orchestra

DEPARTMENT OF MUSIC

8–10 p.m. | Hertz Concert Hall

See Friday, May 4 listing for details.

MONDAY, MAY 7

P Berkeley New Music Project: ECO Ensemble

DEPARTMENT OF MUSIC

8–10 p.m. | Hertz Concert Hall

New works from UC Berkeley graduate composers.

Tickets required.

Event Contact: 510-642-4864

TUESDAY, MAY 8

P Peter Serkins, piano

CAL PERFORMANCES

8 p.m. | Hertz Concert Hall

Pre-performance talk at 7 p.m.

by UC Berkeley musicologist Rachana Vajjhala.

Tickets required.

Event Contact: 510-642-9988



Photo by Kathy Chapman

WEDNESDAY, MAY 9

L South Asia by the Bay: Graduate Student Conference

CENTER FOR SOUTH ASIA STUDIES

9 a.m.–5 p.m. | Stanford University

A conference aiming to establish an annual forum where graduate students from across disciplines and institutions in North America, who work on South Asia, can meet to discuss their work with each other.

Event Contact: 510-642-3608

L Beyond Ideological Conflict: Political Incorporation of Buddhist Youth in the Early PRC

INSTITUTE OF EAST ASIAN STUDIES

12–1 p.m. | Institute of East Asian Studies, 2223 Fulton

Speaker: Brooks Jessup, History, University of Minnesota, Morris

Event Contact: 510-642-2809

L w(E)dnesday: Artists' Gallery Talks

BERKELEY ART MUSEUM

6:30 p.m. | Berkeley Art Museum

State of Mind artists Lynn Hershman, Paul Kos, and Chip Lord talk about their own work and related topics in the exhibition galleries.

Event Contact: 510-642-0808

THURSDAY, MAY 10

L South Asia by the Bay: Graduate Student Conference

CENTER FOR SOUTH ASIA STUDIES

9 a.m.–5 p.m. | Stanford University

See Wednesday, May 9 listing for details.

FRIDAY, MAY 11

L South Asia by the Bay: Graduate Student Conference

CENTER FOR SOUTH ASIA STUDIES

9 a.m.–5 p.m. | Stanford University

See Wednesday, May 9 listing for details.

**L Cold Mountain:
The Life of Creative Translation**

*Judith Lee Stronach Memorial Lectures on the
Teaching of Poetry*

DEPARTMENT OF ARCHITECTURE

6:30–9:30 p.m.
Morrison Room,
101 Doe Library

Speaker: Gary
Snyder, poet

Event Contact:
510-848-7679



P Eleanor Antin, Conversations with Stalin

L@TE: Friday Nights at BAM/PFA

BERKELEY ART MUSEUM

7:30 p.m. | Berkeley Art Museum

Eleanor Antin reads from *Conversations
with Stalin*, her coming-of-age memoir,
performed in the spirit of the irrepressible
Dorothy on the road to Oz.

Event Contact: 510-642-0808

SATURDAY, MAY 12

**P Pre-Commencement Concert:
Graduating Music Students**

DEPARTMENT OF MUSIC

8–10 p.m. | Hertz Concert Hall

Graduating music students perform on the
Hertz Hall stage for friends, family, and
each other.

Event Contact: 510-642-4864

THURSDAY, MAY 17

**L The Political Economy of Gold, Money, and
Loyalty: Californians and the Greenbacks in
the Civil War Era**

BANCROFT LIBRARY

12–1 p.m. | Lewis-Latimer Room,
Faculty Club

Speaker: Michael T. Caires, Gunther Barth
Fellowship Recipient

Event Contact: 510-642-3782

FRIDAY, MAY 18

**L Politics of Culture and Nature in
Northwest China**

CENTER FOR CHINESE STUDIES

3–5 p.m. | 105 North Gate Hall

Panel Discussion. Moderator: You-tien
Hsing, Geography, UC Berkeley

Event Contact: 510-643-6321

PHOTO CREDITS

Front Page: *Sweep at Hoxton* by Banksy

Page 3: doodle by Google August 24, 2011

Page 6 & 23: *Purple and Black* by Darril Tighe

Page 23: *From Blue #6* by Eva Bovenzi

ON EXHIBIT AT THE TOWNSEND CENTER



Letters from Emptiness: Paintings by Eva Bovenzi

On Exhibit: January 17 – May 4, 2012

With their iridescent shapes emerging from blue or red backgrounds, Eva Bovenzi's paintings at one moment suggest outer space, at another the sea. The forms described are similarly ambiguous: they could be tiny or enormous. Like apparitions from a world that is both familiar and unfamiliar, these forms seem caught in the ephemeral moment between appearing and disappearing. They are mysterious messages: letters from emptiness.



Luminous: Watercolor Paintings by Darril Tighe

On Exhibit: August 22, 2011 – May 4, 2012

Darril Tighe's watercolors explore abstraction as a means for expressing a range of emotions through color, layering of washes and choices about composition. Using a series of washes, Tighe creates complex color combinations that suggest a quality of translucence and evoke a state of reverie and reflection through which the viewer is momentarily transported, and then returns, enriched.



NON-PROFIT
ORGANIZATION

U.S. POSTAGE

PAID

UNIVERSITY OF CALIFORNIA,
BERKELEY

TOWNSEND CENTER FOR THE HUMANITIES

University of California, Berkeley

220 Stephens Hall, MC 2340

Berkeley, CA 94720

<http://townsendcenter.berkeley.edu>

HG-09

To unsubscribe to this Newsletter, please e-mail
townsend_center@ls.berkeley.edu or call 510-643-9670.



Spring Semester Deadlines

April 6, 2012

G.R.O.U.P Summer Apprenticeships:
Undergraduate Applications

May 1, 2012

Townsend Working Groups
Project on Disciplinary Innovation: Course Threads
Conference and Lecture Grants

For more information, please visit:

TOWNSENDCENTER.BERKELEY.EDU