



TOWNSEND

CENTER FOR THE HUMANITIES UC BERKELEY

April/May 2014

HIGHLIGHTS

- 5 Stories We Tell
- 10 Animation/Reanimation Conference
- 15 Body, Self, and Consciousness



Una's Lecture: Catherine Malabou, see p. 8



Berkeley Book Chat: Linda Rugg, see p. 8

TUESDAY, APRIL 1

L Taiwan: Identity, Media, and Culture

INSTITUTE OF EAST ASIAN STUDIES

3-5 p.m. | Institute of East Asian Studies, 2223 Fulton, 6th Floor

Speakers:

Frank Liu (National Sun Yat-Sen University): Are We Family? Taiwanese People's Chinese Nationalism, Country Identification and Cultural Identification with "China."

Fang-chih Irene Yang (National Dong Hwa University): The Politics of Interpreting Inter-Asian TV Dramas in Taiwan: The Cases of Empresses in the Palace and Hanzawa Naoki.

Ti Wei (National Chiao Tung University): Rethinking the private and the public: Assessing the experience of Taiwan's media reform movements.

Event Contact: ccarry@berkeley.edu

L Space and Cyberspace - Foundations of Modern Warfighting

Harold Smith Defense and National Security Series



INSTITUTE OF GOVERNMENTAL STUDIES

4-5:30 p.m. | 119 Moses Hall

General William L. Shelton, Commander of the Air Force Space Command on Peterson Air Force Base, Colorado, is responsible for organizing, equipping, training and maintaining mission-ready space and cyberspace forces and capabilities for North American Aerospace Defense Command, U.S. Strategic Command and other

EVENT KEY

- F** FILM
- E** EXHIBITIONS
- P** PERFORMANCES
- L** CONFERENCES, LECTURES, AND READINGS

combatant commands around the world. He leads more than 42,000 professionals assigned to 134 locations worldwide.

Event Contact: k.nguyen@berkeley.edu

L Denotatively, Technically, Literally

REPRESENTATIONS

5-7 p.m. | Geballe Room, 220 Stephens Hall

Margaret Cohen, Ian Duncan, Elaine Freedgood, and Cannon Schmitt will offer reflections on language—denotative, technical, literal—conventionally excluded from literary study. Discussants include Stephen Best (editorial board, *Representations*, co-editor of the special issue "Surface Reading," No. 108, 2009) and Ken Puckett (co-chair, editorial board, *Representations*).

Event Contact: iduncan@berkeley.edu

WEDNESDAY, APRIL 2

P UC Berkeley Percussion Ensemble

61st Annual Noon Concert

DEPARTMENT OF MUSIC

12:15-1 p.m. | Hertz Concert Hall

Featuring percussionists Miriam Anderson, Karen Lin, Rowena Hann, Andy Lu, and Loren Mach

Event Contact: concerts@berkeley.edu

L Apartheid Remains: Ruins of Segregation, Remnants of Struggle

DEPARTMENT OF GEOGRAPHY

6-7:30 p.m. | North Gate Hall Library

3:40-5 p.m. | 575 McCone Hall

Sharad Chari, Associate Professor, University of the Witwatersrand, will speak.

Event Contact: debgray@berkeley.edu

L Pastoral in Palestine

ENGLISH DEPARTMENT

5-7:00 p.m. | 315 Wheeler Hall

A talk by Neil Hertz

Event Contact: afrancoi@berkeley.edu

L How to Think the Knowing Subject Anew? The Concept of the Distributed Center



THE PROGRAM IN CRITICAL THEORY

5-7 p.m. | 340 Moffitt Undergraduate Library

If science is socially or collectively and materially made, H el ne Mialet asks, what are the consequences for our classical notion of the knowing subject, for the most powerful and operative myth of the modern: "the disincorporated brain" and, thus, for our notions of the person, the individual genius, the rational actor, and the psyche?

Event Contact: critical_theory@berkeley.edu, 510-642-1328

L Fourth City: The American Prison Writer as Witness: Migrant Farmworkers in the United States

INSTITUTE FOR THE STUDY OF SOCIETAL ISSUES

4-5:30 p.m. | Institute for the Study of Societal Issues, 2538 Channing

This talk will present *Fourth City: Essays from the Prison in America*, a collection of 71 essays from writers incarcerated in 27 American states. *Fourth City* is the largest collection to date of first-person witness to how the American prison is experienced by those living inside it.

Event Contact: issi@berkeley.edu

L Fourteenth Annual CTP Distinguished Lecturer

BANCROFT LIBRARY

5:30-7:30 p.m. | Doe Library, Morrison Library

Dr. Nikolaos Gonis, University College London, discusses Bernard Grenfell and Arthur Hunt, the Oxford papyrologists who excavated the Tebtunis papyri.

Event Contact: bancroft@library.berkeley.edu

L Liz Ogbu—Creative Disruptions: Designing Opportunities for Impact

ARCH Lecture Series

COLLEGE OF ENVIRONMENTAL DESIGN

6:30-8 p.m. | 112 Wurster Hall

A designer, urbanist, and social innovator, Liz Ogbu focuses on sustainable design and spatial innovation in challenged urban environments around the world. From designing shelters for immigrant day laborers in the U.S. to leading a design workshop at the Clinton Global Initiative Annual Meeting, Ogbu has a long history of engagement in the design for social impact movement.

Event Contact: ced Lec@berkeley.edu

THURSDAY, APRIL 3

L Rowan Ricardo Phillips

Lunch Poems

THE LIBRARY

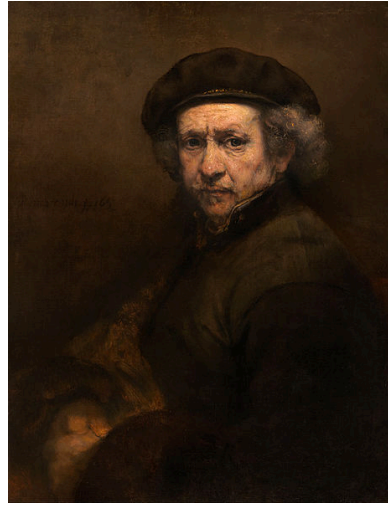
12:10-1 p.m. | Doe Library, Morrison Library

Rowan Ricardo Phillips is the author of *THE GROUND*: poems, winner of the 2013 Great Lakes Colleges Association New Writer Award in Poetry, a finalist for the 2012 Los Angeles Times Book Prize for Poetry, and a finalist for the NAACP Image Award for Outstanding Literary Work in Poetry.

Event Contact: poems@library.berkeley.edu

L Almost Gone: Rembrandt and the Ends of Materialism

Gayley Lecture



DEPARTMENT OF ENGLISH

7-10 p.m. | Maude Fife Room, 315 Wheeler Hall

Steven Goldsmith will present his lecture, "Almost Gone: Rembrandt and the Ends of Materialism." A reception will follow in the lounge (330 Wheeler).

Event Contact: adminofficer_english@berkeley.edu

F Red Ant Dream: The Life of Revolutionary Possibility in India

CENTER FOR SOUTH ASIA STUDIES

4-7 p.m. | 10 Stephens Hall

A screening of Sanjay Kak's new documentary on the Maoist Movement, *Red Ant Dream*. The director will be present.

Event Contact: 510-642-3608

L The First U.S. "War on Terror": The 1798 Sedition Act and Constitutional Politics in the Age of Jefferson

Jefferson Memorial Lecture

GRADUATE DIVISION

4:10 p.m. | Alumni House, Toll Room

Charles McCurdy will consider how the Founding Fathers dealt with the unanticipated emergence of hotly contested, increasingly political interpretations of

the Constitution during the first decade of the Early Republic and also how they responded to fact that constitutional change had occurred through interpretation rather than through constitutional amendment.

Event Contact: lectures@berkeley.edu

L Poetics and Pragmatics in the Portuguese World Empire

TOWNSEND CENTER FOR THE HUMANITIES

5-7 p.m. | 3335 Dwinelle Hall

Panelist/Discussants: Vincent Barletta, Professor in the Department of Iberian and Latin American Culture, Stanford University; Christine Göttler, Kunstgeschichte Abteilung, Universität Bern; Mia Mochizuki, Associate Professor, Thomas E. Bertelsen, Jr, Chair of Art History and Religion, Jesuit School of Theology of Santa Clara University & Graduate Theological Union

Event Contact: stairjes@berkeley.edu

L Kidnapping, Traffic Management and Excise taxes: Layers of Sovereignty in Wartime Lebanon 1975-1990

CENTER FOR MIDDLE EASTERN STUDIES

5-6:30 p.m. | 340 Stephens Hall, Sultan Conference Room

Speaker: Professor Michael Gasper, History Department, Occidental College

Event Contact: cmes@berkeley.edu

L A Talk by Nancy Bentley

DEPARTMENT OF ENGLISH

5-7 p.m. | 300 Wheeler Hall

Nancy Bentley is professor of English at the University of Pennsylvania. She is the author of *Frantic Panoramas: American Literature and Mass Culture 1870-1920* (2009) and *The Ethnography of Manners* (1995 and 2007). Bentley is currently completing a book titled *New World Kinship and the American Novel, 1850-1920*, a study of the way the novel has mediated the multiple forms of kinship coexisting in the Americas.

Event Contact: wendy.xin@berkeley.edu

L In My Backyard: Conversations with Art History Neighbors

DEPARTMENT OF HISTORY OF ART

5:30-7 p.m. | 308A Doe Library

Gwen Allen, Santhi Kavuri-Bauer, and Valerie Soe from San Francisco State University, Department of Art and Department of Asian Studies, in conversation with Berkeley History of Art faculty.

Event Contact: jmccyoung@berkeley.edu

FRIDAY, APRIL 4

L Reframing 3.11: Cinema, Literature, and Media after Fukushima

CENTER FOR JAPANESE STUDIES

PFA Theater and 143 Dwinelle Hall

Since March 11, 2011, images of the earthquake, tsunami and nuclear accident generated massive media attention and transformed our understanding of “disaster.” The symposium will explore how the cinema, literature and media of post-3/11 Japan reframe the images of disaster to create a new type of literacy about survival and precarity.

Event Contact: cjs-events@berkeley.edu

L Georg Hajdu: Recent Work

Composition Colloquium

DEPARTMENT OF MUSIC

3:10-4:30 p.m. | Elkus Room, 125 Morrison Hall

Georg Hajdu is Professor of Multimedia Composition and Music Theory at the Hamburg Hochschule of Music and Theater. His areas of interest include multimedia, microtonality, algorithmic, interactive and networked music performance.

Event Contact: music_admin@lists.berkeley.edu

L Robots and New Media

CENTER FOR NEW MEDIA

9 a.m.-5 p.m. | Sutardja Dai Hall, 310 Banatao Auditorium

Robots are rapidly emerging as extensions of ourselves. Join us as we deconstruct, debate and explore the concept of robots and new media.

Event Contact: info.bcnm@berkeley.edu



F Urban Ruins and Contemporary Chinese Documentary

GLOBAL URBAN HUMANITIES

3-6 p.m. | 142 Dwinelle Hall

Film screening of *Yumen* and post-screening discussions with director J.P. Sniadecki (Performing and Media Arts, Cornell University) in dialogue with Linda Williams (Film and Media, UC Berkeley) and Weihong Bao (Film and Media, East Asian Languages, UC Berkeley).

Event Contact: oscarrosa@berkeley.edu

L Jasmine Sufi and Leo Bryant: The Reading Room

RE@DS

BERKELEY ART MUSEUM AND PACIFIC FILM ARCHIVE

5:30 p.m. | Berkeley Art Museum and Pacific Film Archive

Leo Bryant, a visual artist and writer, and Jaz Sufi, a slam poet, will read from their work.

Event Contact: 510-642-0808

P Creative Growth Beyond Trend Runway Event

L@TE: Friday Nights at BAM/PFA

BERKELEY ART MUSEUM AND PACIFIC FILM ARCHIVE

7:30-9 p.m. | Berkeley Art Museum and Pacific Film Archive

As part of the fortieth anniversary weekend extravaganza, Creative Growth Art Center collaborates with The Possible to present the Beyond Trend Runway Event, featuring one-of-a-kind textile designs.

Event Contact: bampfa@berkeley.edu

SATURDAY, APRIL 5

L Reframing 3.11: Cinema, Literature, and Media after Fukushima

CENTER FOR JAPANESE STUDIES

PFA Theater and 143 Dwinelle Hall

See listing for Friday, April 4.

SUNDAY, APRIL 6

E The Possible Workshop

BERKELEY ART MUSEUM AND PACIFIC FILM ARCHIVE

11 a.m.-3 p.m. | Berkeley Art Museum and Pacific Film Archive

Textile artists Mariano Sosa Martinez and Rafaela Ruiz visit from Oaxaca, Mexico to lead a natural dye workshop.

Event Contact: bampfapress@berkeley.edu

MONDAY, APRIL 7

L Undernutrition and Obesity in Latin America: A Paradox for Policy Makers

CENTER FOR LATIN AMERICAN STUDIES

12-1:15 p.m. | 554 Barrows Hall

Lia C. H. Fernald, Associate Professor of Community Health and Human Development in the School of Public Health at UC Berkeley, will speak.

Event Contact: marianagi@berkeley

EVENT KEY

- F** FILM
- E** EXHIBITIONS
- P** PERFORMANCES
- L** CONFERENCES, LECTURES, AND READINGS

L Sandra Laugier: The Politics of Voice: Wittgenstein, The Ordinary and Care

Townsend Center for the Humanities, the Medical Anthropology Program, and the Program in Critical Theory



4 p.m. | Geballe Room, 220 Stephens Hall

This lecture will explore care and the ordinary, following a thread of Wittgenstein's philosophy that takes us beyond the "grammar" of the first person, the use of psychological verbs, and the nature of states of mind.

Event Contact: townsend_center@ls.berkeley.edu

E Art Under the Gun

CENTER FOR MIDDLE EASTERN STUDIES

7:30 p.m. | 160 Kroeber Hall

Iraqi-born artist Wafaa Bilal fled Iraq in 1991 during the first Gulf War. After spending two years in refugee camps in Kuwait and Saudi Arabia, he came to the U.S., where he graduated from the University of New Mexico and obtained an MFA from the School of the Art Institute of Chicago. Bilal will discuss his performance art projects and his experience as an inhabitant of both the "comfort zone" of the U.S. and the "conflict zone" of Iraq. Reception to follow.

Event Contact: artdept@berkeley.edu

L Anders Winroth: Why Vikings?

PROGRAM IN MEDIEVAL STUDIES

5 p.m. | 3335 Dwinelle Hall

Professor Anders Winroth, Forst Family Professor of History at Yale University, will present a public lecture.

Event Contact: 510-642-5218

L Rereading Ethnomusicology for Gender and Erotics

Music Studies Colloquium

DEPARTMENT OF MUSIC

4:30-6 p.m. | 128 Morrison Hall

Deborah Wong (UC Riverside) offers a deeply necessary and respectful effort to reengage with leading scholarship by ethnomusicologists that has mostly turned a blind eye toward gender and sexuality.

Event Contact: kkarn@berkeley.edu

F Stories We Tell (2012)

Depth of Field + Video Series



TOWNSEND CENTER FOR THE HUMANITIES

7:00 p.m. | Geballe Room, 220 Stephens Hall

Revisiting a family secret through interviews and home movies, *Stories We Tell* uses personal experience to explore questions of love, family, memory, and storytelling. Director Sarah Polley's patchwork of family videos and voiceover narration resurrects her deceased mother and examines the family's memories of an extramarital affair, bringing to light Polley's struggle to comprehend the motivations, thoughts, and actions of another. This film questions the creation of life narratives, compares versions of stories told and retold, and asks whether giving equal merit to all memories and stories results in a fuller picture of truth. This interrogation—of the possibility of truth in storytelling and of the documentary creation process itself—ultimately highlights the fictional aspects of memory and the problematic creation of personal narrative.

Event Contact: townsend_center@ls.berkeley.edu

TUESDAY, APRIL 8

L The Warrior State: Pakistan in the Contemporary World

CENTER FOR SOUTH ASIA STUDIES

12-2 p.m. | 10 Stephens Hall

T.V. Paul (McGill University) applies "war-making and state-making" literature to explain Pakistan's weak state syndrome. He will also compare Pakistan to other national security states: Turkey, Egypt, Indonesia, Taiwan and Korea, and their different trajectories.

Event Contact: csas@berkeley.edu

L What Is Going On In North Korea?

INSTITUTE OF INTERNATIONAL STUDIES

4-5:30 p.m. | 223 Moses Hall

Professor Victor D. Cha (Georgetown) will discuss North Korea. Do recent events signal an opening in the system or a spiraling down of the system? What challenges do the United States and its allies face?

Event Contact: rexille@berkeley.edu

L Monitoring Occupant Comfort and Energy Consumption of Refugee Housing in Tsunami-Stricken Japan

INSTITUTE OF EAST ASIAN STUDIES

5 p.m. | Institute of East Asian Studies, 2223 Fulton St, 6th Floor

Speaker: Susan Ubbelohde, Professor, Architecture, University of California, Berkeley.

Event Contact: ieas@berkeley.edu

L Jorie Graham

Holloway Poetry Reading

DEPARTMENT OF ENGLISH

6:30-8 p.m. | Maude Fife Room, 315 Wheeler Hall

Jorie Graham will read from her work.

Event Contact: 773-412-7438

WEDNESDAY, APRIL 9

L **Hong Kong Films View the People's Republic of China: From "Comrades, Almost a Love Story" to "Life without Principle"**

CENTER FOR CHINESE STUDIES

12:10-1:30 p.m. | Institute of East Asian Studies, 2223 Fulton, 6th Floor

Mary Erbaugh (University of Oregon) discusses how Hong Kong film, like Hong Kong identity, constantly recasts its views of China.

Event Contact: ccs@berkeley.edu

P **Farallon Quintet**

61st Annual Noon Concert

DEPARTMENT OF MUSIC

12:15-1 p.m. | Hertz Concert Hall

Featuring Dan Flanagan (faculty) and Matthew Oshida, violins; Natalie Parker, clarinet; Elizabeth Prio, viola; and Adelle-Akiko Kearns, cello.

This program will include an unknown fragment by Mozart, Bernard Herrman, Clarinet Quintet, and a commissioned work by Durwynne Hsieh.

Event Contact: concerts@berkeley.edu

L **Taiwan: Identity, Media, and Culture**

INSTITUTE OF EAST ASIAN STUDIES

3-5 p.m. | Institute of East Asian Studies, 2223 Fulton, 6th Floor

Speakers: Frank Liu (National Sun Yat-Sen University), Fang-chih Irene Yang (National Dong Hwa University), and Ti Wei (National Chiao Tung University)

L **On Gentrification**

DEPARTMENT OF GEOGRAPHY

3:40-5 p.m. | 575 McCone Hall

Speaker: Elvin Wyly, Associate Professor, University of British Columbia

Event Contact: debgray@berkeley.edu

L **On Imhotep**

NEAR EASTERN STUDIES

4-5 p.m. | 254 Barrows Hall

Speaker: Professor Joachim-Friedrich Quack, University of Heidelberg, Germany

Event Contact: 510-642-3757

L **Neil Denari**

ARCH Lecture Series

COLLEGE OF ENVIRONMENTAL DESIGN

6:30-8 p.m. | 112 Wurster Hall

Neil Denari, principal, Neil M. Denari Architects, Inc. and Professor of Architecture at UCLA, will speak.

Event Contact: ced_lec@berkeley.edu

F **Operation E (2012): Directed by Miguel Courtois**

CENTER FOR LATIN AMERICAN STUDIES

7 p.m. | 2040 Valley Life Sciences Building

Small-time Colombian coca farmer José Crisanto finds himself enmeshed in big-time politics when guerillas bring him a sickly infant to care for.

Event Contact: marianagi@berkeley.edu

THURSDAY, APRIL 10

L **Story Hour in the Library featuring Ayelet Waldman**

STORY HOUR IN THE LIBRARY FEATURING AYELET WALDMAN

5-6 p.m. | Doe Library, Morrison Library
New York Times best-selling author Ayelet Waldman's new novel, *Love and Treasure*, was called a "treasure trove" by Joyce Carol Oates. Previous books include *Red Hook Road* and *Bad Mother: A Chronicle of Maternal Crimes, Minor Calamities and Occasional Moments of Grace*.

Event Contact: storyhour@berkeley.edu

L **Wrapped in the Flag of Israel: Mizrahi Single Mothers and Bureaucratic Torture**

CENTER FOR MIDDLE EASTERN STUDIES

5-6:30 p.m. | Sultan Conference Room, 340 Stephens Hall

Speaker: Prof. Smadar Lavie, Visiting Scholar, CMES, UC Berkeley

Event Contact: cmes@berkeley.edu

L **Reinvent Growth without Pollution: Can India do it?**

20th Annual Lecture on Energy and the Environment

CENTER FOR SOUTH ASIA STUDIES

6-8 p.m. | Sibley Auditorium, Bechtel Engineering Center

Indian environmentalist, political activist, and recipient of the 2005 Stockholm World Water Prize winner Sunita Narain discusses India's double burden of environmental problems: of the poor and of the rich. Can India reinvent its way to growth without pollution? Are there lessons in this for the rest of the world?

Event Contact: 510-642-3608

FRIDAY, APRIL 11

L **Henning Trüper on "Realphilologie and Aesthetics in German Orientalism, ca. 1900"**

Noon Colloquium

DEPARTMENT OF GERMAN

12 p.m. | 282 Dwinelle Hall

Henning Trüper's research revisits European Orientalism as philology and explores the fragmentation of the ontological commitments of philology in regard to its objects of research (natural languages, grammars, texts, scripts, histories, antiquities).

Event Contact: haselbeck@berkeley.edu

EVENT KEY

- F** FILM
- E** EXHIBITIONS
- P** PERFORMANCES
- L** CONFERENCES, LECTURES, AND READINGS

L California Interdisciplinary Consortium for Italian Studies

DEPARTMENT OF ITALIAN STUDIES

Room 133, Humanities Building, San Francisco State University

Featured Speakers: Rebecca West, Key-note speaker: William R. Kenan, Jr., Distinguished Service Professor Emerita of Italian Literature, and the Department of Cinema and Media Studies.

Event Contact: issa@berkeley.edu

L Conflux: New Performance Research and Practice

DEPARTMENT OF THEATER, DANCE & PERFORMANCE STUDIES

9 a.m.-5 p.m. | 370 Dwinelle Hall

"Conflux" means merging, a flowing-together. Over the course of the 2013-14 academic year, TDPS professors will be working together to produce new works of scholarship and performance in three "streams:" Intercultural Performance, Intermedia Performance, and Politics & Performance. At this one-day symposium, all three streams come together as faculty share their pioneering contributions to the research and practice of performance.

Event Contact: performance@berkeley.edu

L History of Art Graduate Symposium: Invisibility—Illegibility

HISTORY OF ART GRADUATE SYMPOSIUM: INVISIBILITY—ILLEGIBILITY

9 a.m.-3 p.m. | 308A Doe Library

This day-long symposium draws together six graduate scholars from a wide range of institutions to speak on the themes of invisibility and illegibility in art and visual culture.

Event Contact: ersilverman@berkeley.edu

L Erin Gee: Recent Work

Composition Colloquium

DEPARTMENT OF MUSIC

3:10-4:30 p.m. | Elkus Room, 125 Morrison Hall

Professor Erin Gee (University of Illinois) has received numerous awards and honors, including the Rome Prize in 2007 and the Guggenheim Fellowship.

Event Contact: music_admin@lists.berkeley.edu

L What am I?

CENTER FOR KOREAN STUDIES

4 p.m. | Institute of East Asian Studies, 2223 Fulton, 6th Floor

Hyon Gak Sunim will introduce the public to the basic teachings of Zen and its central technology of looking into one's true nature.

Event Contact: cks@berkeley.edu

L Gillian Osborne and Simona Schneider: The Reading Room

RE@DS

BERKELEY ART MUSEUM AND PACIFIC FILM ARCHIVE

5:30 p.m. | Berkeley Art Museum and Pacific Film Archive

Gillian Osborne, a Ph.D. candidate in English at UC Berkeley, and Simona Schneider, a Ph.D. candidate in Comparative Literature, will read their poetry.

Event Contact: 510-642-0808

P Alvin Curran: Late Nights at BAM/PFA

L@TE

BERKELEY ART MUSEUM AND PACIFIC FILM ARCHIVE

7:30 p.m. | Berkeley Art Museum and Pacific Film Archive

The irreverent composer and performer Alvin Curran visits from his home base in Rome to play from "The Alvin Curran Fakebook," a recent solo piece drawing on over fifty years of composing.

Event Contact: bampfapress@berkeley.edu

L Plasticity and Pathology: The History and Theory of Neural Subjects Workshop



DEPARTMENT OF RHETORIC

Geballe Room, 220 Stephens Hall

This workshop will bring together diverse scholars interested in the historical and conceptual problems of life and particularly the life of human beings in the neural age.

Co-sponsored by Townsend Center for the Humanities, Dean of Arts and Humanities, Dean of Social Sciences, and the Department of Rhetoric.

Event Contact: rhetoric@berkeley.edu

SATURDAY, APRIL 12

L California Interdisciplinary Consortium for Italian Studies

DEPARTMENT OF ITALIAN STUDIES

Please see the listing for Friday, April 11

Event Contact: issa@berkeley.edu

P Cal Day at the Department of Music

DEPARTMENT OF MUSIC

10 a.m.-4 p.m. | Hertz Concert Hall

Come hear the Department of Music's performances on Cal Day, a variety of ensemble performances, to include jazz, baroque, chorus, gospel, and African drumming/dance, gamelan, and chamber music.

Event Contact: music_admin@lists.berkeley.edu

P **Edith Coliver Festival of Cultures:
SpringFest on CalDay**

INTERNATIONAL HOUSE

11 a.m.-6 p.m. | International House

The Edith Coliver Festival of Cultures "SpringFest" is an exuberant celebration of life and culture from around the globe. Attendees are treated to tantalizing delicacies from Armenia to Zambia. Performances of traditional music and dance from all corners of the globe and booths offering information, jewelry and handicrafts fill I-House from the front steps to the auditorium!

Event Contact: 510-642-9460

L **Plasticity and Pathology: The History and Theory of Neural Subjects Workshop**

DEPARTMENT OF RHETORIC

Geballe Room, 220 Stephens Hall

See Friday, April 11 listing for event details.

SUNDAY, APRIL 13

E **The Possible Workshop**

BERKELEY ART MUSEUM AND PACIFIC FILM ARCHIVE

11 a.m.-3 p.m. | Berkeley Art Museum and Pacific Film Archive

Renowned natural perfumer Mandy Aftel leads a lesson in scent based on her contribution to The Possible library.

Event Contact: bampfapress@berkeley.edu

L **Curator Gallery Talk: The Elephant's Eye: Artful Animals in South and Southeast Asia**

BERKELEY ART MUSEUM AND PACIFIC FILM ARCHIVE

2-3 p.m. | Berkeley Art Museum and Pacific Film Archive

Guest curator Padma Maitland analyzes specific paintings in the exhibition to show how art can reflect the evolving historical and cultural relationship between humans and animals.

Event Contact: 510-642-0808

EVENT KEY

- F** FILM
- E** EXHIBITIONS
- P** PERFORMANCES
- L** CONFERENCES, LECTURES, AND READINGS

MONDAY, APRIL 14

L **Public Health and Equity in Latin America**
CENTER FOR LATIN AMERICAN STUDIES

12-1:15 p.m. | 554 Barrows Hall

Stefano Bertozzi is the dean of the School of Public Health at UC Berkeley; he has lived and worked in Africa, Asia, and Latin America.

Event Contact: marianagi@berkeley.

L **Catherine Malabou: Odysseus' Changed Soul**

Una's Lecture



TOWNSEND CENTER FOR THE HUMANITIES

6 p.m. | Banatao Auditorium, Sutardja Dai Hall

French philosopher Catherine Malabou teaches at the Centre for Research in Modern European Philosophy at Kingston University in London. Her work has created the foundation for a wide range of current research focusing on the intersections between neuro- and biological science and the humanities. Her Una's lecture will offer a contemporary reading of Plato's myth of Er (*Republic*, Book 10).

Event Contact: townsend_center@ls.berkeley.edu

L **Polling, Public Opinion, and Political Accountability in Korea and Beyond**

INSTITUTE OF EAST ASIAN STUDIES

4 p.m. | Institute of East Asian Studies, 2223 Fulton St, 6th Floor, Berkeley

Speaker: Taeku Lee, Professor, Political Science, University of California, Berkeley
Event Contact: ieas@berkeley.edu

TUESDAY, APRIL 15

L **Travel Writing and Japanese Modernism**
INSTITUTE OF EAST ASIAN STUDIES (IEAS)

4 p.m. | Institute of East Asian Studies, 2223 Fulton St, 6th Floor

Speaker: Dan O'Neill, Associate Professor, East Asian Language and Culture, University of California, Berkeley

Event Contact: ieas@berkeley.edu

WEDNESDAY, APRIL 16

L **Self-Projection: The Director's Image in Art Cinema**

Berkeley Book Chats



TOWNSEND CENTER FOR THE HUMANITIES

12-1 p.m. | Geballe Room, 220 Stephens Hall

Professor of Scandinavian Linda Rugg's new book, *Self-Projection: The Director's Image in Art Cinema* (University of Minnesota Press, 2014), explores how non-documentary narrative art films create new forms of collaborative self-representation and selfhood.

Event Contact: townsend_center@ls.berkeley.edu

L Research Workshop in American Politics

DEPARTMENT OF POLITICAL SCIENCE

12-1:30 p.m. | Harris Room, Institute of Governmental Studies, 118 Moses Hall

Speaker: Anthony Fowler, University of Chicago (Harris School of Public Policy)

Event Contact: gailmard@berkeley.edu

P Solo Piano

61st Annual Noon Concert

DEPARTMENT OF MUSIC

12:15-1 p.m. | Hertz Concert Hall

Jeremiah Trujillo, solo piano

Beethoven Sonata No. 21 in C Major, "Waldstein"; Ligeti Etudes Book 1, No. 6 "Automne à Varsovie"; Schumann Toccata Op. 7

Event Contact: concerts@berkeley.edu

L The Great God Beyond the Sierras

DEPARTMENT OF GEOGRAPHY

3:40-5 p.m. | 575 McCone Hall

David Lowenthal and Bill Denevan discuss *To Pass on a Good Earth: The Life and Work of Carl Sauer*.

Event Contact: debgray@berkeley.edu

L Modern Japanese Zen Flirts with the Nenbutsu

CENTER FOR JAPANESE STUDIES

4 p.m. | Institute of East Asian Studies, 2223 Fulton, 6th Floor

Today, the Sōtō sect of Zen Buddhism is synonymous with the practice of sitting meditation, or zazen. However, this association was not ineluctable. Dominick Scarangelo, Shinjo Ito Postdoctoral Fellow, UC Berkeley, will discuss how doctrinal systemization and ritual standardization, following the Meiji restoration, the Sōtō sect institutionalized a very different practice for its lay followers: invoking the name of the Buddha.

Event Contact: cjs-events@berkeley.edu

L Representing the Past as History: Romila Thapar on Early North India

CENTER FOR SOUTH ASIA STUDIES

5-7 p.m. | Maude Fife Room, 315 Wheeler Hall

Lecture by renowned historian from South Asia, Romila Thapar, Professor Emerita of Ancient Indian History, Jawaharlal Nehru University.

Event Contact: csas@berkeley.edu

THURSDAY, APRIL 17

L Gold on the Trees, Gold in the Ground: Cyanide and the Making of Southern California (1886-1915)

BANCROFT LIBRARY

12-1 p.m. | Faculty Club, Lewis-Latimer Room

Cyanide fumigation in Los Angeles in the fall of 1886 allowed grower-capitalists to turn the valleys of Southern California into a citrus empire. But synthetic cyanide didn't arrive in Southern California as a pesticide; it was cyanide's ability to separate gold from ore that made it a valued commodity in the mineral rich west. Adam Romero, Bancroft Library Study Award recipient and doctoral candidate in Geography, UC Berkeley, will share his research on how Southern California's citrus empire was possible only because of the use of cyanide fumigation, and cyanide fumigation was only possible because of changes in industrial chemistry and the international gold mining industry.

Event Contact: bancroft@library.berkeley.edu

L Catherine Flynn

English Department 20th Century Colloquium

JAMES JOYCE WORKING GROUP

4 p.m. | 300 Wheeler Hall

Berkeley English Professor Catherine Flynn will speak. Co-sponsored by the James Joyce working group and the English Department 20th Century Colloquium.

Event Contact: lmansouri@berkeley.edu

L Screens/Everywhere

GLOBAL URBAN HUMANITIES

5-7 p.m. | 142 Dwinelle Hall

Lecture by Professor Francesco Casetti, Film Studies Program, Humanities Program, Yale University.

Event Contact: oscarsosa@berkeley.edu

L Pasolini's Petrolio-Fossil Fuels, Chaotic Desire, Anthropocene Narratives

2014 Annual Ringrose Lecture

DEPARTMENT OF ITALIAN STUDIES

5 p.m. | Maude Fife Room, 315 Wheeler Hall

Speaker: Karen Pinkus, Cornell University

Event Contact: issa@berkeley.edu

L Marj al-Zuhour and the Poetics of Displacement

CENTER FOR MIDDLE EASTERN STUDIES

5-6:30 p.m. | Sultan Conference Room, 340 Stephens Hall

Speakers: Professor Keith Feldman, Ethnic Studies Department, UC Berkeley; Emily Drumsta, Ph.D. Candidate, Department of Comparative Literature, UC Berkeley

Event Contact: cmes@berkeley.edu

L Holy Minded: American Evangelicals and Intellectual Life

BERKELEY CENTER FOR THE STUDY OF RELIGION

5-7 p.m. | 3335 Dwinelle Hall

Molly Worthen, University of North Carolina, Chapel Hill, examines how 20th-century American evangelicals have navigated the straits between religious and secular authorities in the realms of science, history, and worship suggests that this crisis is both evangelicals' greatest bane and an abiding source of strength.

Event Contact: info.bcsr@berkeley.edu

L Race, Place, and Power: Lecture by Thomas Sugrue

COLLEGE OF ENVIRONMENTAL DESIGN

5-7 p.m. | 110 Wurster Hall

Thomas Sugrue explores the history

of urban planners, policymakers, and community activists who addressed racial inequality in American cities during the 1960s and 1970s, a critical period for the reorientation of urban and metropolitan policy in the United States.

Event Contact: ttoscano@berkeley.edu

FRIDAY, APRIL 18

L Animation/Reanimation Conference



TOWNSEND CENTER FOR THE HUMANITIES

10:30 a.m. - 6 p.m. | Geballe Room, 220 Stephens Hall

Join Una's lecturer Catherine Malabou for a conference exploring reports of near-death experiences as well as fictions of after-death journeys from the perspectives of psychoanalysis, philosophy, anthropology, and film.

Event Contact: townsend_center@ls.berkeley.edu

L Challenging Inequality: Defining a Better Future

The 6th Sociological Research Symposium

DEPARTMENT OF SOCIOLOGY

9 a.m.-4 p.m. | Anna Head Alumae Hall, 2537 Haste

The UC Berkeley Sociological Research Symposium offers undergraduates, graduate students, and professionals opportunities

to share exceptional sociological work from different disciplines.

Event Contact: ucberkeley_symposium@gmail.com

P Mapping the Ephemeral City with Diana Eck

CENTER FOR SOUTH ASIA STUDIES

12-2 p.m. | Maude Fife Room, 315 Wheeler Hall

Lecture by Diana L. Eck, Professor of Comparative Religion and Indian Studies at Harvard University and the Director of The Pluralism Project at Harvard.

Event Contact: csas@berkeley.edu

L Chamber Music

61st Annual Noon Concert

DEPARTMENT OF MUSIC

12:15-1 p.m. | Hertz Concert Hall

Department of Music students perform chamber music. Program to be announced.

Event Contact: concerts@berkeley.edu

L Georgina Born: Directions in Digital Musics

Bloch Lecture Series

DEPARTMENT OF MUSIC

4:30-6 p.m. | Elkus Room, 125 Morrison Hall

Speaker: Professor Georgina Born, Oxford University.

Event Contact: concerts@berkeley.edu

L Beyond Capital: Climate Change and the Problem of Scale in Human History

CENTER FOR SOUTH ASIA STUDIES

5-7 p.m. | 112 Wurster Hall

University of Chicago historian Dipesh Chakrabarty discusses certain rifts in the literature on climate change to demonstrate the role that the problem of scale plays in making the phenomenon of global

warming into a human predicament.

Event Contact: csas@berkeley.edu

L Jari Bradley and Jazz Hudson: The Reading Room

RE@DS

BERKELEY ART MUSEUM AND PACIFIC FILM ARCHIVE

5:30 p.m. | Berkeley Art Museum and Pacific Film Archive

Jari "SoJari" Bradley, a young, San Francisco-based, black queer poet, MC, and arts educator and spoken-word artist Jasmine "Jazz" Hudson perform their work.

Event Contact: 510-642-0808

P TURF Inc. Presents Turf Dance Battle, featuring The Mekanix

L@TE: Friday Nights at BAM/PFA

BERKELEY ART MUSEUM AND PACIFIC FILM ARCHIVE

7:30-9 p.m. | Berkeley Art Museum and Pacific Film Archive

Join an all-style dance tournament featuring the best of Bay Area turf dancing, hosted by Johnny 5 of Oakland-based dance crew TurF FeinZ and founder of Turf Inc., which focuses on building community through dance battles as an act of unity.

Event Contact: bampfa@berkeley.edu

P University Gospel Chorus: Willis Kirk Easter Jazz Oratorio

DEPARTMENT OF MUSIC

7:30-10 p.m. | Hertz Concert Hall

The University Gospel Chorus, directed by D. Mark Wilson, performs excerpts from Kirk's sacred jazz/gospel composition with the accompaniment of Bay Area big band leader David Hardiman Sr., members of his San Francisco Allstar Band, and student jazz artists.

Event Contact: concerts@berkeley.edu

EVENT KEY

- F FILM
- E EXHIBITIONS
- P PERFORMANCES
- L CONFERENCES, LECTURES, AND READINGS

P Cine/Spin

L@TE: Late Nights at BAM/PFA

BERKELEY ART MUSEUM AND PACIFIC FILM ARCHIVE

7:30 p.m. | Berkeley Art Museum and Pacific Film Archive

Our annual student DJ extravaganza featuring UC Berkeley students spinning to films from the BAM/PFA Collection. Reception and photo booth hosted by the BAM/PFA Student Committee.

Event Contact: bampfapress@berkeley.edu

SATURDAY, APRIL 19

L Swami Vivekananda: Celebrating the man and his legacy on the 150th anniversary of his birth

CENTER FOR SOUTH ASIA STUDIES

2-5 p.m. | Wheeler Auditorium

CSAS and the Berkeley Vedanta Society are proud to present a day-long conference celebrating Swami Vivekananda on the occasion of the 150th anniversary of his birth.

Event Contact: 510-642-3608

SUNDAY, APRIL 20

L The Possible Workshop

BERKELEY ART MUSEUM AND PACIFIC FILM ARCHIVE

11 a.m.-3 p.m. | Berkeley Art Museum and Pacific Film Archive

Join The Something as they create the final round of instruments for analog video and sound manipulations for their massive participatory jam as part of L@TE on April 25.

Event Contact: bampfapress@berkeley.edu

MONDAY, APRIL 21

L Constructive Literature "a la Ehrenburg": Veshch'-Gegenstand-Objet

DEPARTMENT OF SLAVIC LANGUAGES AND LITERATURES

4 p.m. | 160 Dwinelle Hall

Speaker: Ben Dhooge, visiting scholar at UC

Berkeley and postdoctoral scholar in the Department of Languages and Cultures, Ghent University, Belgium

Event Contact: issa@berkeley.edu

L From Memory to Marble: The Frieze of the Voortrekker Monument at Pretoria

DEPARTMENT OF HISTORY OF ART

5:30-7 p.m. | 308A Doe Library

Speaker: Rolf Michael Schneider, Professor für Klassische Archäologie, Institut für Klassische Archäologie

Event Contact: jmccyoung@berkeley.edu

TUESDAY, APRIL 22

P Habalando Bomba



DEPARTMENT OF MUSIC

1-3 p.m. | D-37 Hearst Field Annex

Learn about the history and performance of Afro-Puerto Rican bomba drumming, dance, and song!

Speakers/Performers: Dr. Pablo Luis Rivera and Rafael Maya.

Event Contact: 510-642-4864

P Gandhi before India: A reading by author, Ramachandra Guha

CENTER FOR SOUTH ASIA STUDIES

2-4 p.m. | Maude Fife Room, 315 Wheeler Hall

Ramachandra Guha, reads from his latest book, Gandhi before India, the first volume of what is already being considered as the definitive biography of Gandhi, one of the most remarkable figures of the 20th century.

Event Contact: 510-642-3608

L Disaster Reaction and Response: 2014 TUSA Scholars Present

INSTITUTE OF EAST ASIAN STUDIES

3-4:30 p.m. | Institute of East Asian Studies, 2223 Fulton, 6th Floor

Speakers: Yungnane Yang, Department of Political Science & Institute of Political Economy, National Cheng Kung University; Mei-tzu, Tsai, Department of Chinese Literature, National Cheng Kung University.

Event Contact: ieas@berkeley.edu

L Ariella Azoulay: The Nascent Photographic Statement of Human Rights

"Visual Culture and Human Rights" Lecture Series

BERKELEY HUMAN RIGHTS PROGRAM

4-5:30 p.m. | Geballe Room, 220 Stephens Hall

Much has been written on the primacy of the principle of state sovereignty in the discourse of human rights that was shaped in the mid-1940s, and on the textual precedents to the Universal Declaration of Human Rights – from the Atlantic Charter (1941) through the Charter of the United Nations (1945). But little has been said about the conditions under which this universal language was taught and the way it shaped the visual photographic statements (énoncés) of human rights. More particularly, little attention has been devoted to what could be seen by citizens in the late 1940s as violations of human rights and what was - or was not - presented by sovereign states as violations of human rights.

Event Contact: lynesayskiba@berkeley.edu

L Labor Issues: Taiwan

INSTITUTE OF EAST ASIAN STUDIES

4:30-6 p.m. | Institute of East Asian Studies, 2223 Fulton, 6th Floor

Speakers:

Ying-Jung Yeh (National Taiwan University of Science and Technology): A Diary Study of Smart Phone's Usage, Work Stress and Job Satisfaction.

Chun-Hsi Vivian Chen (National

Central University): Leadership, Positive Organizational Behavior, and Job Performance.
Event Contact: ccary@berkeley.edu

WEDNESDAY, APRIL 23

L Research Workshop in American Politics DEPARTMENT OF POLITICAL SCIENCE

12-1:30 p.m. | Institute of Governmental Studies, Harris Room, 118 Moses Hall
Speaker: Éric Bélanger, McGill University
Event Contact: gailmard@berkeley.edu

L Crossing Paths: Graduate and Undergraduate Exchanges of Indigenous Research

AMERICAN INDIAN GRADUATE PROGRAM
12-1 p.m. | 554 Barrows Hall
The American Indian Graduate Student Association presents a showcase of graduate and undergraduate research from across campus at their first annual student lecture series.
Event Contact: 510-642-3228

P Gamelan of Java and Bali

61st Annual Noon Concert
DEPARTMENT OF MUSIC
12:15-1 p.m. | Hertz Concert Hall
Javanese & Balinese gamelan classes perform new and old repertoire, directed by Midiyanto and I Dewa Putu Berata with Ben Brinner and Lisa Gold.
Event Contact: concerts@berkeley.edu

P Words in Action: A Multilingual Theatrical Production

DEPARTMENT OF ITALIAN STUDIES
5:30-7 p.m. | 308A Doe Library
3-7 p.m. | International House, Chevron Auditorium

Speaker/Performer: Annamaria Bellezza and numerous performers TBA
Event Contact: issa@berkeley.edu

L Encountering Poverty: Space, Class and Poverty Politics

DEPARTMENT OF GEOGRAPHY
3:40-5 p.m. | 575 McCone Hall
Speaker: Vickie Lawson, Professor, University of Washington
Event Contact: debgray@berkeley.edu

L Inquiry into the Growth and Decline of the Very Poor in Japan

CENTER FOR JAPANESE STUDIES
4 p.m. | Institute of East Asian Studies, 2223 Fulton, 6th Floor
Japan is still often described as a relatively egalitarian society with a strong and well-developed middle-class. However, in recent decades, poverty and inequality have become major issues. David-Antoine Malinas (Université Paris Diderot) will examine the origin, evolution and methodology used to count the homeless population in Japan in order to explain this apparent contradiction of more poor, fewer homeless people.
Event Contact: cjs-events@berkeley.edu

L Changing the Nature of Work

SCHOOL OF INFORMATION
4:10-5:30 p.m. | 210 South Hall
In the coming era of ubiquitous sensors and miniaturized mobile computing, designers need to think about how to seamlessly weave the digital world into our lives at work. In this talk, Arnold Lund will discuss how GE Global Research is pursuing new opportunities in analytics visualization, field engineering, wearables, robotics, semiautonomous vehicles, and agents that can be applied to the industrial Internet.

Event Contact: 510-642-1464

THURSDAY, APRIL 24

L Bone Flute to Auto-Tune: A Conference on Music and Technology in History, Theory and Practice

DEPARTMENT OF MUSIC
Elkus Room, 125 Morrison Hall
This conference aims to question and illuminate the acoustic/electronic and analog/digital divides by addressing “new” music technologies from across history, from notation systems to sound recording, string instruments to synthesizers, carillons to computers, metronomes to MIDI—from bone flute to auto-tune.
Event Contact: music_admin@lists.berkeley.edu

E Exhibit: Portugal’s Carnation Revolution: April 25, 1974



THE LIBRARY

Through September 2 | Bernice Layne Brown Gallery, Doe Memorial Library
April 25, 1974 was at once an ending and a beginning: it was the end of the Estado Novo dictatorial regime and the beginning of Portugal’s democratic process. This exhibition commemorates the fortieth anniversary of the country’s bloodless military coup and transition from dictatorship to democracy.
Event contact: cpotts@library.berkeley.edu

EVENT KEY

- F** FILM
- E** EXHIBITIONS
- P** PERFORMANCES
- L** CONFERENCES, LECTURES, AND READINGS

L 40th Anniversary of Portugal's Flower Revolution

38th Annual Conference on Portuguese-American Education and Culture

INSTITUTE OF EUROPEAN STUDIES

9 a.m. | Wheeler Hall, Maude Fife Room

The 38th Annual Conference on Portuguese-American Education & Culture features an exhibit opening of April 25, 1974 - Portugal's Flower Revolution" at Doe Memorial Library, a Portuguese film session, and an array of guest speakers and artists. Portuguese Youth Day at Cal on April 24 will kick-off the four day conference.

Event Contact: kseid@berkeley.edu

L Devalued Bodies in an Era of Neoliberal Choice

4:00-5:30 p.m. | 691 Barrows Hall

Mary Susman (Gender & Women's Studies & Sociology), Ella Bastone (Gender & Women's Studies), and Rachel Upton (Gender & Women's Studies) discuss the changing landscape of U.S. "equality," with certain once-outcast identities now seduced by the neoliberal, capitalist economy and assimilated into normative notions of belonging. While certain bodies become recognizable subjects, other bodies are narrowly constructed as internal enemies that fuel the illusion of equality; we witness dangerous boundary-shifting between legitimate subjects and illegitimate (non) subjects.

Event contact: centerrg@berkeley.edu

L Faranaka MirafTAB Lecture

COLLEGE OF ENVIRONMENTAL DESIGN

5-7 p.m. | 112 Wurster Hall

Professor MirafTAB is a Professor of Urban and Regional Planning, University of Illinois at Urbana Champaign. Her scholarship is situated at the intersection of geography, planning, and feminist studies, using case study and ethnographic methodologies.

Event Contact: mcocoma@berkeley.edu

L Making a Home in the Heartland: Immigration and Global Labor Mobility

COLLEGE OF ENVIRONMENTAL DESIGN

5-7 p.m. | 106 Wurster Hall

Franak MirafTAB, University of Illinois, will discuss her project, which examines the transformation of a de-populated town in the rural rustbelt location of Beardstown, Illinois, exposing the global inequalities that produce immigration and revealing the practices that "outsource" the social reproduction of immigrant workers to their communities of origin.

Event Contact: ttoscano@berkeley.edu

FRIDAY, APRIL 25

L Buddhism, Mind, and Cognitive Science



BUDDHIST STUDIES

Toll Room, Alumni House

This conference is dedicated to the exploration of the methodological underpinnings of the current encounter between Buddhism and cognitive science.

Event Contact: buddhiststudies@berkeley.edu

L Bone Flute to Auto-Tune: A Conference on Music and Technology in History, Theory and Practice

DEPARTMENT OF MUSIC

Elkus Room, 125 Morrison Hall

See the listing for Thursday, April 24

Event Contact: music_admin@lists.berkeley.edu

L 40th Anniversary of Portugal's Flower Revolution

38th Annual Conference on Portuguese-American

Education and Culture

INSTITUTE OF EUROPEAN STUDIES

9 a.m. | Wheeler Hall, Maude Fife Room and other campus locations

See the listing for Thursday, April 24

Event Contact: kseid@berkeley.edu

P Brahms Clarinet Quintet

61st Annual Noon Concert

Department of Music

12:15-1 p.m. | Hertz Concert Hall

Department of Music Students perform the Brahms Clarinet Quintet.

Event Contact: concerts@berkeley.edu

L Jocelyn Saidenberg and Michelle Ty: The Reading Room

RE@DS

BERKELEY ART MUSEUM AND PACIFIC FILM ARCHIVE

5:30 p.m. | Berkeley Art Museum and Pacific Film Archive

Authors Jocelyn Saidenberg and Michelle Ty read from their work.

Event Contact: 510-642-0808

P The Something: Late Nights at BAM/PFA

L@TE

7:30 p.m. | Berkeley Art Museum and Pacific Film Archive

The Something is a conglomeration of possibilities for exploration and observation. Participants might begin by tentatively plunking a string or picking up a fabric. Eventually, the dynamics of our actions coalesce into moments of ordered harmony, dissolve back into chaos, and then re-emerge ordered once again.

Event Contact: bampfapress@berkeley.edu

SATURDAY, APRIL 26

L Bone Flute to Auto-Tune: A Conference on Music and Technology in History, Theory and Practice

DEPARTMENT OF MUSIC

Elkus Room, 125 Morrison Hall

See the listing for Thursday, April 24.

Event Contact: music_admin@lists.berkeley.edu

P Hablando Bomba

DEPARTMENT OF MUSIC

2-4 p.m. | Berkeley Art Museum and Pacific Film Archive

Performance and Bombazo with Las Bomberas de la Bahía.

Free with museum admission

Event Contact: 510-642-4864

L 40th Anniversary of Portugal's Flower Revolution

38th Annual Conference on Portuguese-American Education and Culture

INSTITUTE OF EUROPEAN STUDIES

9 a.m. | Wheeler Hall, Maude Fife Room and other campus locations

See the listing for Thursday, April 24

Event Contact: kseid@berkeley.edu

P University and Chamber Choruses: Processions, Rituals, and a Wedding!

DEPARTMENT OF MUSIC

April 26 | 8-10 p.m. | Hertz Concert Hall
Marika Kuzma conducts the University and Chamber Choruses in this varied concert of music that is meditative, exalting, and raucous. Including the Rachmaninoff "Vespers;" Brahms' "Zigeunerlieder" (Gypsy Songs); and Stravinsky's famous "Svadebka" (Les Noces—The Wedding) for chorus and four pianos.

Event Contact: concerts@berkeley.edu

SUNDAY, APRIL 27

L 40th Anniversary of Portugal's Flower Revolution

38th Annual Conference on Portuguese-American

Education and Culture

INSTITUTE OF EUROPEAN STUDIES

9 a.m. | Wheeler Hall, Maude Fife Room and other campus locations

See the listing for Thursday, April 24.

Event Contact: kseid@berkeley.edu

E The Possible Workshop

BERKELEY ART MUSEUM AND PACIFIC FILM ARCHIVE

11 a.m.-3 p.m. | Berkeley Art Museum and Pacific Film Archive

Join Publication Studio, an artist-run press that works with artists and writers to print and bind books on demand.

Event Contact: bampfapress@berkeley.edu

P University Wind Ensemble

DEPARTMENT OF MUSIC

3-5 p.m. | Hertz Concert Hall

Robert Calonico, director

Whitacre: "Equus;" Mackey: "Asphalt Cocktail;" Mendelssohn: "Overture for Band;" Ticheli: "Nitro; Reed: Third Suite."

Event Contact: concerts@berkeley.edu

MONDAY, APRIL 28

L Discussion with Timothy Hampton

FRANCOPHONE STUDIES WORKING GROUP

11:30 a.m.-1:30 p.m. | 4104 Dwinelle Hall

Please join us for a discussion with Professor Timothy Hampton (French & Comparative Literature) on his forthcoming essay "Colonies Without Colonialism: Literature, Territory, Population, from Foucault to Montaigne."

Event Contact: cscholl@berkeley.edu

L John Parker of UVA

Medieval and Early Modern Graduate Speaker Series

DEPARTMENT OF ENGLISH

6-8 p.m. | 330 Wheeler Hall

John Parker of the University of Virginia will speak.

Event Contact: spencer.strub@berkeley.edu

L Paul DeMarinis: "Sound, Technology, the Neglect of Reason: How I Made Certain of My Works"

ATC Lecture

CENTER FOR NEW MEDIA

7:30-9 p.m. | Banatao Auditorium 310 Sutardja Dai Hall

UC Berkeley's Art, Technology, and Culture lecture series, founded in 1997, is an internationally recognized forum for ideas that challenge conventional wisdom about technology and culture.

Event Contact: info.bcnm@berkeley.edu

TUESDAY, APRIL 29

L Consuming Gold: Reframing Gender, Property and Aesthetics in Contemporary India

CENTER FOR SOUTH ASIA STUDIES

3-5 p.m. | 10 Stephens Hall

Nilika Mehrotra is a social anthropologist teaching at Jawaharlal Nehru University, New Delhi, India. Currently she is at University of California, Berkeley, CA as a Fulbright Senior Research Fellow (2013-2014) studying disability Studies Programmes in India and the US.

Event Contact: csas@berkeley.edu

L Continuity and Change: The Contemporary Politics of Language and Cultural Revitalization for Indigenous Peoples in the U.S.

CENTER FOR RACE AND GENDER

4-5:30 p.m. | 691 Barrows Hall

In this colloquium Tasha Hauff (Ethnic Studies) presents "A Case for Concern in Lakota Language Revitalization: A Glimpse at Who's Learning Lakota Today and Why"

EVENT KEY

- | | |
|----------|-------------------------------------|
| F | FILM |
| E | EXHIBITIONS |
| P | PERFORMANCES |
| L | CONFERENCES, LECTURES, AND READINGS |

and Tria Andrews (Ethnic Studies) presents "Carceral Constellations: Indigenous Educators and Frank Waln's "Oil for Blood" in Deconstructing Deviance and Promoting Culturally-Relevant Education."

Event Contact: 510-643-8488

L From Industrial Ruins to a Sustainable Future? Land Redevelopment and Urban Upgrading in the Pearl River Delta after the Crash

INSTITUTE OF EAST ASIAN STUDIES

5 p.m. | Institute of East Asian Studies, 2223 Fulton St, 6th Floor

Lan-chih Po (UC Berkeley) will explore how land redevelopment in the Pearl River Delta (PRD) region has been launched as a "spatial fix" to promote urban and industrial upgrades in the face of economic retreat in southern China.

Event Contact: ieas@berkeley.edu

L Body, Self, and Consciousness



TOWNSEND CENTER FOR HUMANITIES

7:30 p.m. | Geballe Room, 220 Stephens Hall

Thomas Metzinger is professor of theoretical philosophy at the Johannes Gutenberg-Universität Mainz. His research focuses on analytical philosophy of the mind and philosophical aspects of neuro- and cognitive sciences, as well as connections between ethics, philosophy of the mind, and anthropology.

Event Contact: townsend_center@ls.berkeley.edu

WEDNESDAY, APRIL 30

L Research Workshop in American Politics

DEPARTMENT OF POLITICAL SCIENCE

12-1:30 p.m. | Institute of Governmental Studies, Harris Room, 118 Moses Hall

Speaker: Kevin Quinn, Berkeley Law

Event Contact: gailmard@berkeley.edu

P Chamber Music

61st Annual Noon Concert

DEPARTMENT OF MUSIC

12:15-1 p.m. | Hertz Concert Hall

Event Contact: concerts@berkeley.edu

L Georgina Born: Music and the Digital

Bloch Lecture series

DEPARTMENT OF MUSIC

4:30-6 p.m. | Elkus Room, 125 Morrison Hall

Professor Georgina Born (Oxford University) will give a talk entitled "Directions in Digital Musics."

Event Contact: concerts@berkeley.edu

L Body Musics and the Empire of Time

Judith Lee Stronach Lecture

DEPARTMENT OF ARCHITECTURE

6:30 p.m. | The Morrison Library, Doe Library

Ross Gay, Associate Professor of Poetry at Indiana University and 2013 Guggenheim fellow, will deliver the eleventh annual Judith Lee Stronach Lecture on the Teaching of Poetry. Nikky Finney, poet and National Book Award winner, will introduce the talk.

Event Contact: lifchez@berkeley.edu

P Friction Quartet and Magik*Magik Orchestra perform Michael Gordon's "Van Gogh"

Late Nights at BAM/PFA

BERKELEY ART MUSEUM AND PACIFIC FILM ARCHIVE

7:30 p.m. | Berkeley Art Museum and Pacific Film Archive

Opera in Gallery B! Versatile all-star

ensemble Magik*Magik Orchestra joins contemporary music luminaries the Friction Quartet under the direction of conductor Dustin Soiseth to perform a chamber opera based on the life of Vincent Van Gogh.

Event Contact: bampfapress@berkeley.edu

L Anne Boyer

Holloway Poetry Reading

DEPARTMENT OF ENGLISH

6:30-8 p.m. | Maude Fife Room, 315 Wheeler Hall

A visual artist and poet born in Topeka, Kansas, Anne Boyer is the author of *The Romance of Happy Workers* (Coffee House Press, 2008).

Event Contact: 773-412-7438

THURSDAY, MAY 1

L Lunch Poems presents Student Readings

THE LIBRARY

12:10-1 p.m. | Doe Library, Morrison Library

One of the year's most lively events, the student reading includes winners of the following prizes: Academy of American Poets, Cook, Rosenberg, and Yang, as well as students nominated by Berkeley's creative writing faculty, Lunch Poems volunteers, and representatives from student publications.

Event Contact: poems@library.berkeley.edu

F De Sidere 7: Desire's Vexed Status - A film by Nicolás Grandi and Lata Mani

CENTER FOR SOUTH ASIA STUDIES

4-6 p.m. | 10 Stephens Hall

Lecture and screening of *De Sidere 7*, followed by discussion with the directors.

De Sidere 7 is an experimental work that interweaves performance, dance, poetry, storytelling and text to reflect upon aspects of desire. Shot in Bangalore and Delhi, the film scripts the work of five performing artists into a sensorially rich meditation.

Event Contact: csas@berkeley.edu

L A lecture by Anthony Tamburri

DEPARTMENT OF ITALIAN STUDIES

5 p.m. | 219 Dwinelle Hall

Speaker: Anthony Tamburri, Dean, John D. Calandra Italian American Institute, Queens College, CUNY

Event Contact: issa@berkeley.edu

L Story Hour in the Library: Student Reading

THE LIBRARY

5-6 p.m. | Doe Library, Morrison Library

Story Hour in the Library celebrates the writers in our campus community with an annual student reading. The event will feature short excerpts of work by winners of the year's biggest prose prizes, Story Hour in the Library interns, and faculty nominees.

Event Contact: storyhour@berkeley.edu

L Viewing Big Night as Easy as One, Two, Three: A Triadic Notion of an Italian/American Identity

5-7 p.m. | Geballe Room, 220 Stephens Hall

Anthony J. Tamburri, Professor and Dean, John D. Calandra Italian American Institute, City University of New York

Co-sponsored by the Department of Comparative Literature, the Department of Italian Studies, and the Sidney and Margaret Ancker Chair in Spanish and Comparative Literature.

L Arab America: Gender, Cultural Politics, and Activism

CENTER FOR RACE AND GENDER

5:30-8 p.m. | 370 Dwinelle Hall

In Arab America: Gender, Cultural Politics, and Activism, Nadine Naber tells the stories of second generation Arab American young adults living in the San Francisco Bay Area, most of whom are political activists engaged in two culturalist movements

that draw on the conditions of diaspora, a Muslim global justice and a Leftist Arab movement.

Event Contact: centerrg@berkeley.edu

FRIDAY, MAY 2

L Ecology and Space

Berkeley Japan Studies 2014 Graduate Conference

CENTER FOR JAPANESE STUDIES

International House, Ida/Robert Sproul Room

This conference brings together prominent scholars and graduate students from all disciplines in the field of Japanese Studies to discuss the concepts of ecology and space from pre-modern times to the present.

Event Contact: cjsgradconference@berkeley.edu

L Feminist Interventions: On Gender and South Asia

The 3rd South Asia by the Bay Graduate Student Conference

CENTER FOR SOUTH ASIA STUDIES

8:30 a.m.-6 p.m. | UC Santa Cruz

A large new generation of graduate students working on South Asian the humanities and social sciences is in the process of rethinking approaches to the study of South Asian culture, society, politics, economics, law, history, literature, and the arts. This year we focus on the theme of "Feminist Interventions: On Gender and South Asia."

Event Contact: 510-642-3608

L Breaking Barriers, Building Community: 35 Years of Training Social Change Scholars

CENTER FOR RESEARCH ON SOCIAL CHANGE

9 a.m.-4:30 p.m. | Anna Head Alumnae Hall, 2537 Haste

What is the relevance of the academy to achieving social justice? What does it mean

to be a social change scholar? This one-day conference will feature presentations by alumni of the graduate training program, now distinguished academics, whose groundbreaking work on stratification and social change in US cities challenges the presumptions of power and the powerful.

Event Contact: crsc@berkeley.edu

L Re-reading Italian Americana

ITALIAN STUDIES

12 p.m.-2 p.m. | Comparative Literature Library, 4337 Dwinelle

Anthony J. Tamburri and Laura Ruberto (Berkeley City College) in conversation about Tamburri's new book and on new directions for Italian American Studies. Moderated by Francine Masiello.

Co-sponsored by the Department of Comparative Literature, the Department of Italian Studies, and the Sidney and Margaret Ancker Chair in Spanish and Comparative Literature

L Yiorgos Vassilandonakis: Building a Middle Period Style

Composition Colloquium

DEPARTMENT OF MUSIC

3:10-4:30 p.m. | 128 Morrison Hall

Yiorgos Vassilandonakis is an active composer of chamber, vocal and orchestral and multimedia works, some of which have been recently commissioned and championed by the New York New Music Ensemble, the Juilliard Percussion Ensemble, the Charleston Symphony Orchestra and Chorus, the Halsey Contemporary Art Institute and the Neophonia ensemble.

Event Contact: music_admin@lists.berkeley.edu

EVENT KEY

- F** FILM
- E** EXHIBITIONS
- P** PERFORMANCES
- L** CONFERENCES, LECTURES, AND READINGS

L After Assimilating Seoul: Ch'anggyong Garden and the Post-Colonial Remaking of Seoul's Public Spaces

CENTER FOR KOREAN STUDIES

4 p.m. | Institute of East Asian Studies, 2223 Fulton, 6th Floor

Todd A. Henry (UC San Diego) explores the fate of Ch'anggyong Garden, whose popular zoo, park, museum and other recreational facilities persisted long after 1945. The early architects of South Korea creatively re-used this site for new national purposes, including to memorialize anti-communist patriots and to showcase the country's infant industries.

Event Contact: cks@berkeley.edu

P Eco Ensemble

DEPARTMENT OF MUSIC

8:00 -10:00 p.m. | Hertz Concert Hall

David Milnes conducts new works by UC Berkeley graduate student composers.

Event Contact: concerts@berkeley.edu

SATURDAY, MAY 3

L Ecology and Space

Berkeley Japan Studies 2014 Graduate Conference

CENTER FOR JAPANESE STUDIES

International House, Ida/Robert Sproul Room

See the listing for Friday, May 2

Event Contact: cjsgradconference@berkeley.edu

L Feminist Interventions: On Gender and South Asia

The 3rd South Asia by the Bay Graduate Student Conference

CENTER FOR SOUTH ASIA STUDIES

8:30 a.m.-6 p.m. | UC Santa Cruz

See the listing for Friday, May 2

Event Contact: 510-642-3608

L Breaking Barriers, Building Community: 35 Years of Training Social Change Scholars

CENTER FOR RESEARCH ON SOCIAL CHANGE

9 a.m.-4:30 p.m. | Anna Head Alumnae Hall, 2537 Haste

What is the relevance of the academy to achieving social justice? What does it mean to be a social change scholar? This one-day conference will feature presentations by alumni of the graduate training program, now distinguished academics, whose groundbreaking work on stratification and social change in US cities challenges the presumptions of power and the powerful.

Event Contact: crsc@berkeley.edu

SUNDAY, MAY 4

E The Possible Workshop

BERKELEY ART MUSEUM AND PACIFIC FILM ARCHIVE

11 a.m.-3 p.m. | Berkeley Art Museum and Pacific Film Archive

Join The Possible ceramics team and a host of special guests including John Toki of Leslie Ceramics to talk ceramics and see the results of the Pope Valley wood-firing.

Event Contact: bampfapress@berkeley.edu

P University Baroque Ensemble

DEPARTMENT OF MUSIC

3-5 p.m. | Hertz Concert Hall

Students of the ensemble perform works by Biber, Telemann, Purcell, and Lully, on antique and period instruments.

Event Contact: concerts@berkeley.edu

MONDAY, MAY 5

L Ambassador Nirupama Rao Delivers the 3rd Sarah Kailath Memorial Lecture on "Women and Leadership"

CSAS lecture series on the theme of Women and Leadership.

CENTER FOR SOUTH ASIA STUDIES

6-7:30 p.m. | The Bancroft Hotel, 2680 Bancroft Way

Ambassador Rao assumed her responsibilities as ambassador of India to the United States in September 2011, a position she held until November 2013. Prior to that, Rao was appointed foreign secretary, the highest office in the Indian Foreign Service, where she served a two-year term until July 2011. Rao has served previously in Washington as minister for press and cultural affairs at the Indian embassy from 1993 to 1995. She has also served in Moscow as deputy chief of mission at her country's embassy there in the late 1990s. On return to New Delhi, she was designated as spokesperson of the Ministry of External Affairs in 2001, the first woman to hold that post.

Event Contact: pkala@berkeley.edu

WEDNESDAY, MAY 7

L Research Workshop in American Politics

DEPARTMENT OF POLITICAL SCIENCE

12-1:30 p.m. | Institute of Governmental Studies, Harris Room, 118 Moses Hall

Speaker: Marty Gilens, Princeton University.

Event Contact: gailmard@berkeley.edu

P University Gospel Chorus

61st Annual Noon Concert

DEPARTMENT OF MUSIC

12:15-1 p.m. | Hertz Concert Hall

The UC Berkeley Gospel Chorus features an afternoon of some of the most popular praise songs in the shift of gospel music from traditional to contemporary.

Event Contact: concerts@berkeley.edu

THURSDAY, MAY 8

L The Humanities and Changing Conceptions of Work: A Career Workshop



9 a.m.-6:30 p.m. | The Brower Center, 2150 Allston Way

This full-day career workshop will help prepare graduate students and recent graduates for the work that awaits them in 21st-century global society and includes a hands-on resume workshop and networking opportunities.

For Information: <http://humanitiesandwork.org/>

L Transmissions and Obstructions: English Excursions in the Indian Ocean and North Atlantic

TOWNSEND CENTER FOR THE HUMANITIES

5-7 p.m. | 308A Doe Library

Panelists: Nancy Um, Professor in the Art History Department, SUNY Binghamton; Todd Olson, Professor in the History of Art Department, UC Berkeley.

Event Contact: stairjes@berkeley.edu

FRIDAY, MAY 9

L Canadianizing the United States?: Public Opinion across the 49th Parallel

CANADIAN STUDIES PROGRAM

9 a.m.-5:30 p.m. | Golub Home Room, International House

Speakers: Irene Bloemraad and others, Canadian Studies Program

Event Contact: 510-642-0531

P Returning Current with Daniela Gesundheit and Katy Payne

Late Nights at BAM/PFA

BERKELEY ART MUSEUM AND PACIFIC FILM ARCHIVE

7:30 p.m. | Berkeley Art Museum and Pacific Film Archive

In preparing the musicians for this performance, Payne will teach the principles, structures, and techniques of humpback whale song through several group sound experiments.

Event Contact: bampfapress@berkeley.edu

SATURDAY, MAY 10

P Javanese Shadow Play: Gamelan Sari Raras

DEPARTMENT OF MUSIC

7:30-10 p.m. | Hertz Concert Hall

Shadow master Midiyanto manipulates dozens of puppets as he tells a tale from Hindu-Javanese mythology in English & Javanese, with musical accompaniment by Gamelan Sari Raras (Midiyanto and Ben Brinner, directors), featuring guest drummer Heri Purwanto and vocalist Heni Savitri.

Event Contact: concerts@berkeley.edu

SUNDAY, MAY 11

E The Possible Workshop

BERKELEY ART MUSEUM AND PACIFIC FILM ARCHIVE

11 a.m.-3 p.m. | Berkeley Art Museum and Pacific Film Archive

For Mother's Day, artist Drew Bennett, along with a crew of The Possible artists, hosts a Field Day event as a culmination to the Sweat Sessions series, inspired by the tradition of New Games Tournaments.

Event Contact: bampfapress@berkeley.edu

TUESDAY, MAY 13

L Curator Talk: The Elephant's Eye: Artful Animals in South and Southeast Asia

BERKELEY ART MUSEUM AND PACIFIC FILM ARCHIVE

12:15.-1:15 p.m. | Berkeley Art Museum and Pacific Film Archive

Guest curator Padma Maitland, a Ph.D. candidate at UC Berkeley, discusses the important role of elephants in the art and culture of South and Southeast Asia. Characterized by Maitland as "tender, wise, and strong," elephants serve as religious, political, and cultural icons in many of the works on view. Tickets required.

Event Contact: 510-642-0808

THURSDAY, MAY 15

L Radiating Texts: The Properties of "Mark Twain," 1862-1864

BANCROFT LIBRARY

12-1 p.m. | Lewis-Latimer Room, Faculty Club

Part of a larger project about print and place in the Gold Rush West, Garrett Morrison, Reese Fellow at The Bancroft Library, will discuss the emergence of "Mark Twain" as a regional literary brand between 1862 and 1864.

Event Contact: bancroft@library.berkeley.edu

EVENT KEY

- F** FILM
- E** EXHIBITIONS
- P** PERFORMANCES
- L** CONFERENCES, LECTURES, AND READINGS

SUNDAY, MAY 18

E The Possible Workshop



BERKELEY ART MUSEUM AND PACIFIC FILM ARCHIVE

11 a.m.-3 p.m. | Berkeley Art Museum and Pacific Film Archive

Join us for a final workshop! All studios will be active for last experimentations and to design materials for L@TE: The Possible Closing Ceremony on May 23. The print shop will be buzzing as we start the assembly-line production of The Possible Artist Book.

Event Contact: bampfapress@berkeley.edu

L Artists' Talks

The 44th Annual M.E.A. Graduate Exhibition

BERKELEY ART MUSEUM AND PACIFIC FILM ARCHIVE

3 p.m. | Berkeley Art Museum and Pacific Film Archive

Meet the 2014 graduates of UC Berkeley's Masters of Fine Arts program as they talk about their work at the outset of their professional careers.

Event Contact: 510-642-0808

FRIDAY, MAY 23

P The Possible Closing Ceremony

Late Nights at BAM/PFA

BERKELEY ART MUSEUM AND PACIFIC FILM ARCHIVE

7:30 p.m. | Berkeley Art Museum and Pacific Film Archive

Join us as The Possible draws together all of its participants for one final celebration. Artists will converge on BAM/PFA from points all around the Bay Area, including a group of students carrying in the harvest from the Edible Schoolyard.

Event Contact: bampfapress@berkeley.edu

SUNDAY, MAY 25

E The Possible Workshop

BERKELEY ART MUSEUM AND PACIFIC FILM ARCHIVE

11 a.m.-3 p.m. | Berkeley Art Museum and Pacific Film Archive

Join us as we ceremonially empty the gallery! All work displayed during *The Possible* will be unpacked from the shelving structure and presented to each artist and workshop participant. We will be honoring each person who contributed time and effort in shaping this exhibition with a copy of the limited-edition artist book.

Event Contact: bampfapress@berkeley.edu

P UC Berkeley Symphony Orchestra: European Tour Bon Voyage Concert

DEPARTMENT OF MUSIC

3-5 p.m. | Hertz Concert Hall

The orchestra will perform in Vienna, Prague, Budapest and Bratislava for four concerts this summer.

Event Contact: concerts@berkeley.edu

WEDNESDAY, MAY 28

L Sound Change in Interactive Human Systems

DEPARTMENT OF LINGUISTICS

Clark Kerr Campus, Conference Center

A three-day international international workshop on Sound Change.

Event Contact: scihs@berkeley.edu



NON-PROFIT
ORGANIZATION

U.S. POSTAGE

PAID

UNIVERSITY OF CALIFORNIA,
BERKELEY

TOWNSEND CENTER FOR THE HUMANITIES

University of California, Berkeley

220 Stephens Hall, MC 2340

Berkeley, CA 94720

<http://townsendcenter.berkeley.edu>

HG-09

To unsubscribe to this Newsletter, please e-mail
townsend_center@ls.berkeley.edu or call 510-643-9670.

Exhibit: Bill Dallas



Imaginations features the paintings of Oakland artist and UC Berkeley alumnus Bill A. Dallas. Often incorporating a mixture of calligraphy, figure studies, and abstract painting, Dallas' work is also heavily influenced by jazz music.

On display through May 9, 2014

For more information visit:

townsendcenter.berkeley.edu/events/exhibits

Spring Semester Deadlines

May 02, 2014

Disciplinary Innovation: Course Threads Grants

Conference & Lecture Grants

May 15, 2014

Townsend Working Groups

For more information, please visit:

TOWNSENDCENTER.BERKELEY.EDU