



MARCH 2007

CALENDAR OF EVENTS

TOWNSEND CENTER FOR THE HUMANITIES UC BERKELEY



On Exhibit

Hush, Hush

Paintings by
Katherine Sherwood

see p.3



March 13

The Una's Lecture

Robert Post, Professor
of Law, Yale University

FEATURE EVENTS

THE UNA'S LECTURE

Every year for one week, the Townsend Center hosts a distinguished scholar as Una's Lecturer in the Humanities. The Una's Lecturer delivers one or more public lectures and meets with faculty and students. This year the Center is pleased to welcome Robert Post, David Boies Professor of Law at Yale University, as the 2006-2007 Una's Lecturer. In his lecture, "Religion and Freedom of Speech: Cartoons and Controversies," Post will discuss recent European controversies concerning the publication of possibly blasphemous and Islamophobic Danish cartoons.

Post focuses his teaching and writing on constitutional law, and is a specialist in the areas of First Amendment theory and constitutional jurisprudence. He is the author of *Constitutional Domains: Democracy, Community, Management* and the co-author of *Prejudicial Appearances: The Logic of American Antidiscrimination Law*. He has received fellowships from the Guggenheim Foundation and the American Council of Learned Societies, and he is a member of the American Academy of Arts and Sciences and the American Law Institute. Post earned his J.D. from Yale Law School and was law clerk to Justice William J. Brennan Jr. of the U.S. Supreme Court. Before teaching at Yale, Post taught at UC Berkeley.

The Una's Lecture will take place on Tuesday, March 13, 2007 at 7:30 pm in the Lipman Room of Barrows Hall. A follow-up panel discussion will take place on Wednesday, March 14 at 4 pm at the Townsend Center. Post will be joined by Deniz Gökçürk (German), David Hollinger (History), and Saba Mahmood (Anthropology). Anthony J. Cascardi (Director of the Townsend Center) will moderate.

Both events are open to the public. No tickets are required.



March 16

**Forum on the Humanities
and the Public World**

Alfred Brendel in Conversation

see p.9

PICASSO IN THE LATE 1920s

On March 2 – 3, the Townsend Center co-sponsors with the Department of Art History an international conference on Pablo Picasso organized by T. J. Clark, Professor of Art History. The conference will be held in Wurster Hall (see page 4 for details).

“Picasso in the Late 1920s has two main ambitions,” says T. J. Clark. “It will bring together critics and art historians to discuss a largely unexplored moment in Picasso’s work—the period of experiment and extremism sometimes called ‘Picasso’s Surrealism.’ That period is hard to characterize, and easy to dismiss. What art was to be in the aftermath of Cubism was obscure. Maybe it would have to court outright monstrosity. Maybe it would find itself regressing to the absolute first steps of imaging and image-making, and celebrating the one-year-old’s worldview.

“What Picasso did in the late 1920s was written about with real passion and intelligence by Michel Leiris, Carl Einstein, and others. Perhaps it will be possible—and here is the conference’s first basic wager—to mobilize elements of that thought again; and even to extract Picasso from the circle of hero-worship plus *ressentiment* to which he seems presently consigned.

“Second, but hardly separable, is the idea that conferences should try harder to make ‘discussion’ possible; and that conferences about pictures, in particular, should make time for free-ranging response to the images themselves. The second day of the conference will be especially light on papers and heavy on ‘practical criticism.’ Inevitably the results will be uneven; but why squander the unique opportunity offered by the presence of so many individuals with things to say about specific works? In the case of Picasso, we need above all to

escape from the common wisdom of his admirers/detractors. The conference’s second wager, then, is that argument and observation in face of the objects (or rather, reproductions of them) may be the best way to put the ‘standard account’ in jeopardy.”

HUSH, HUSH: PAINTINGS BY KATHERINE SHERWOOD

Katherine Sherwood teaches in the Art Department at UC Berkeley. Her mixed-media paintings gracefully juxtapose abstracted medical images, such as cerebral angiograms of the artist’s brain, with calligraphic renderings of ancient symbols. Her paintings investigate the point at which the essential aspects of art, medicine, and disability intersect—playing with our striving to know more, to control our future.

Sherwood has exhibited her work in many solo shows, most recently in Los Angeles and Philadelphia. Her work has also appeared in many group exhibitions, including “Visionary Anatomies” at the National Academy of Sciences in 2005, “Inside Out Loud: Visualizing Women’s Health in Contemporary Art” at the Kempner Museum in 2004, and the Whitney Art Museum biennial in 2000. She has also exhibited in New York, Chile, Japan, and Thailand. She has been the recipient of numerous awards, including a National Endowment for the Arts Artist Fellowship, the Adaline Kent Award from the San Francisco Art Institute, and a Guggenheim Fellowship.

The Center will host an opening reception with the artist on Thursday, March 22 at 4 pm.

The exhibit will run March 11 – May 31, 2007 at the Townsend Center. Please call 510/643-9670 for viewing hours.



THURSDAY, MARCH 1

L Lunch Poems

THE LIBRARY

Myung Mi Kim

Noon | Morrison Library in Doe Library
Born in Seoul, Korea, Myung Mi Kim travels to the root of language, connecting speech and culture in a rich web of immaculate phrases. Kim strips words to the bone, using fragments and white space to enhance her themes of dislocation and first-language loss. She is the author of four books of poetry, including *Under Flag*, winner of the 1991 Multicultural Publishers Book Award, and *Commons* (2002).

Support for the series is provided by the Townsend Center, Mrs. William Main, the Library, the Morrison Library Fund, the dean's office of the College of Letters and Science, and Poets & Writers, Inc.

L Portraits of Emancipation: Independence-Era West Africa and Abolition-Era Brazil

CENTER FOR RACE AND GENDER

Natalia Brizuela (Spanish and Portuguese) and **Jennifer Bajorek** (Rhetoric and Comparative Literature)

4pm | 691 Barrows Hall

L Egyptian by Association: People's Associations and the Cultivation of National Ideals (1885-1939)

CENTER FOR MIDDLE EASTERN STUDIES

Lisa Pollard, History, University of North Carolina at Wilmington

5pm | Sultan Room, 340 Stephens Hall

EVENT KEY

- C CONCERTS**
- E EXHIBITIONS**
- P PERFORMANCES AND FILMS**
- CS CONFERENCES AND SYMPOSIA**
- L LECTURES, COLLOQUIA AND READINGS**

P Women of Color Film Festival

ASUC/CONSORTIUM FOR THE ARTS

5:30pm | Pacific Film Archive | Free First Thursday

The Women of Color Film Festival will screen exceptional works by fresh and accomplished, award-winning filmmakers from the African, Asian, Latina, Middle Eastern, and native diasporas, and will host Bay Area filmmaker Lourdes Portillo in residence. While particularly concerned with Latina and Chicano issues, Portillo's work transcends borders. Nominated for over 30 awards, Portillo's films have moved the imaginations of generations of young filmmakers and her original documentary film style continues to challenge the way stories are told and viewed.

On Thursday, March 1 there will be a film screening of *Las Madres: The Mothers of Plaza de Mayo* (Susana Muñoz, Lourdes Portillo; Argentina, 1985) followed by a salon with director **Lourdes Portillo**.

The festival runs through March 17 at the Pacific Film Archive and San Francisco Cinematheque. For film details, visit bampfa.berkeley.edu.

Co-sponsored by the Townsend Center, the Empowering Women of Color Conference, the Graduate Assembly, Film Studies, Ethnic Studies, SUPERB, the Multicultural Student Development Center, and Gap Inc.

P Hit Man File

CENTER FOR SOUTHEAST ASIAN STUDIES

Film screening

7pm | 2040 Valley Life Sciences Building

C Evening Concert

MUSIC

Symphony No. 6 (Mahler) and *thalassinó* (Yiorgos Vassiladonakis)

University Symphony Orchestra, **David Milnes**, conductor

8pm | Hertz Hall

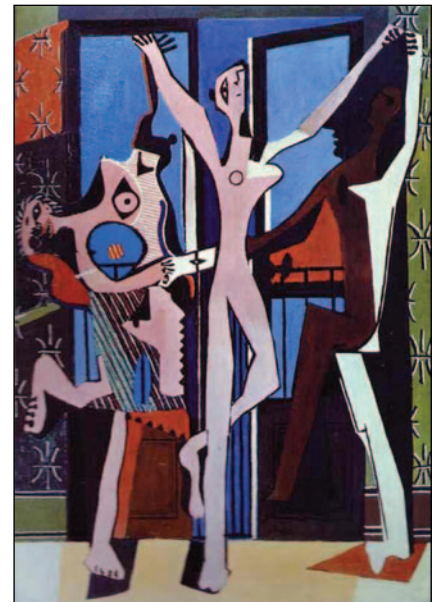
For tickets, phone 510/642-9988 or visit tickets.berkeley.edu.

FRIDAY, MARCH 2

CS Picasso in the Late 1920s

ART HISTORY

10am – 7pm | 112 Wurster Hall



Professor T. J. Clark will host an international gathering of scholars to discuss Picasso's work during the period sometimes called "Picasso's Surrealism."

SPEAKERS:

Elizabeth Cowling (University of Edinburgh) | "Picasso's *Painter and Model* of 1928: a sculptor's studio?" with respondents **Dawn Ades** (University of Essex) and **Yve-Alain Bois** (Institute for Advanced Study, Princeton University)

T. J. Clark | "The Ordinary Optimism of Picasso," with respondents **Jay Bernstein** (New School University) and **Benjamin Buchloh** (Harvard University)

Lisa Florman (Ohio State University) | "The Vicious Circle of Picasso's *Three Dancers*," with respondents **Anne Wagner** (Art History) and **Christopher Green** (Courtauld Institute of Art, London)

A reception will follow the conference at 6:15 pm at the Berkeley Art Museum.

CS Berkeley-Stanford Conference**INSTITUTE OF SLAVIC, EAST EUROPEAN, AND EURASIAN STUDIES***Ukraine: History and Society*

9am – 6pm | Heyns Room, Faculty Club

Speakers: **John Connelly** (History), **Robert Crews** (Stanford University), **Victoria Frede** (History), **David Frick** (Slavic Languages and Literatures), **Roy J. Gardner** (Indiana University), **Nazar Kholod** (Ivan Franko National University of Lviv), **Nancy Kollmann** (Stanford University), **Roman Koropecj** (UCLA), **Marika Kuzma** (Music), **Olga Matich** (Slavic Languages and Literatures), **Yuri Slezkine** (History), **Lucan Way** (University of Toronto), **Amir Weiner** (Stanford University), and **Jason Wittenberg** (Political Science).

For more information, contact Andree Kirk at akirk@berkeley.edu.

L Buddhist Material Culture and the Construction of Pan-Asianism in Pre-War Japan**INSTITUTE OF EAST ASIAN STUDIES**

Richard M. Jaffe, Japanese Religion, Duke University

Noon | IEAS Conference Room, 2223 Fulton Street, 6th Floor

L Famine in North Korea: Markets, Aid, and Reform**INSTITUTE OF EAST ASIAN STUDIES**

Stephan Haggard, International Relations and Pacific Studies, UC San Diego

4pm | IEAS Conference Room, 2223 Fulton Street, 6th Floor

C Evening Concert**MUSIC**

Symphony No. 6 (Mahler) and *thalassinó* (Yiorgos Vassiladonakis)

University Symphony Orchestra, **David Milnes**, conductor

8pm | Hertz Hall

For tickets, phone 510/642-9988 or visit tickets.berkeley.edu.

P Dolly West's Kitchen**THEATER, DANCE AND PERFORMANCE STUDIES**

8pm | Zellerbach Playhouse

Set in Ireland during World War II, *Dolly West's Kitchen*, by Frank McGuinness, is the gripping and blisteringly funny story of a close-knit Irish family struggling to come to terms, not only with the effects of war on their country, but also with one another, as issues of love, sex, jealousy, adultery, homosexuality, and divided loyalties come to the fore. Directed by Christine Nicholson.

The play runs March 2 – 4 and March 9 – 11. For tickets, visit theater.berkeley.edu.

SATURDAY, MARCH 3**CS Picasso in the Late 1920s****ART HISTORY**

10am – 6pm | 112 Wurster Hall

SPEAKERS:

Jeremy Melius | “Inscription and Castration in Picasso’s *Painter and Model* of 1927,” with respondents **Hal Foster** (Princeton University) and **Garrett Stewart** (University of Iowa)

Charles Miller (University of Essex) | “Bataille with Picasso: *Crucifixion* (1930) and Apocalypse,” with respondents **Amy Lyford** (Occidental College, Los Angeles) and **Sebastian Zeidler** (Art History)

The Saturday session of the conference is by invitation only.

P Corpus: A Home Movie for Selena**ASUC/CONSORTIUM FOR THE ARTS**

Film screening with filmmaker **Lourdes Portillo** in person

7pm | Pacific Film Archive

Part of the Women of Color Film Festival. For tickets, visit bampfa.berkeley.edu.

C Evening Concert**MUSIC**

Symphony No. 6 (Mahler) and *thalassinó* (Yiorgos Vassiladonakis)

University Symphony Orchestra, **David Milnes**, conductor

8pm | Hertz Hall

For tickets, phone 510/642-9988 or visit tickets.berkeley.edu.

P Dolly West's Kitchen**THEATER, DANCE AND PERFORMANCE STUDIES**

8pm | Zellerbach Playhouse

SUNDAY, MARCH 4**P Dolly West's Kitchen****THEATER, DANCE AND PERFORMANCE STUDIES**

2pm | Zellerbach Playhouse

MONDAY, MARCH 5**L Poetry Reading****SLAVIC LANGUAGES AND LITERATURES**

Olga Sedakova, Moscow poet

4pm | 160 Dwinelle Hall

TUESDAY, MARCH 6**P L Film Art Phenomena****PACIFIC FILM ARCHIVE**

Nicky Hamlyn, filmmaker

7:30pm | Pacific Film Archive

For tickets, visit bampfa.berkeley.edu

WEDNESDAY, MARCH 7**L Rescuing German Science: The Political Transformation of the Kaiser Wilhelm Institute after 1945****INSTITUTE FOR EUROPEAN STUDIES**

Michael Schuering, independent scholar

Noon | 201 Moses Hall

C 54th Annual Noon Concert Series

MUSIC

String Quartet no. 2 in A minor, op. 13
(Mendelssohn)

April Paik, Melisa Lin (violin), Jeff Kuo
(viola), and Ting Chin (cello)

12:15pm | Hertz Hall

L **Clandestine Settlements in Lisbon**

PORTUGUESE STUDIES PROGRAM, INSTITUTE OF EUROPEAN STUDIES

Tiago Castela, Architecture

3pm | 201 Moses Hall

CS **Art in a Time of Conflict: Torture, Human Rights and Terrorism**

CENTER FOR LATIN AMERICAN STUDIES

Jenny S. Martinez (Law, Stanford University), Aryeh Neier (Open Society Institute), José Zalaquett (Human Rights Center, University of Chile Law School), and Philip Zimbardo (Psychology, Stanford University)

4pm | Booth Auditorium, Boalt Hall

P **Am I Making Art**

PACIFIC FILM ARCHIVE

7pm | Pacific Film Archive

A screening of works by Vito Acconci, John Baldessari, Teresa Hak Kyung Cha, and others.

Part of the series “Then, Not Nauman.”
For tickets, visit bampfa.berkeley.edu.

EVENT KEY

- C** CONCERTS
- E** EXHIBITIONS
- P** PERFORMANCES AND FILMS
- CS** CONFERENCES AND SYMPOSIA
- L** LECTURES, COLLOQUIA AND READINGS

THURSDAY, MARCH 8

L **Elites, Elitism, Education, and Democracy**

CENTER FOR STUDIES IN HIGHER EDUCATION

Sheldon Rothblatt, History

Noon | Townsend Center, 220 Stephens Hall

L **Much Ado About the Appearance and Perception of Water**

CENTER FOR BUDDHIST STUDIES

Dorji Wangchuk, University of Hamburg

4pm | IEAS Conference Room, 2223 Fulton Street, 6th Floor

L **Intelligence and Policy: Myth and Reality**

INSTITUTE OF INTERNATIONAL STUDIES

Paul Pillar, Georgetown University

4pm | 223 Moses Hall

L **Jefferson Memorial Lecture**

THE GRADUATE COUNCIL

“The Coming Collapse of the Middle Class: Higher Risks, Lower Rewards, and a Shrinking Safety Net”

Elizabeth Warren, Leo Gottlieb Professor of Law, Harvard Law School

4:10pm | Chevron Auditorium, International House

Distinguished law scholar Elizabeth Warren teaches contract law, bankruptcy, and commercial law at Harvard Law School. She is an outspoken critic of America’s credit economy, which she has linked to the continuing rise in bankruptcy among the middle class.

L **Does a Buddha Possess Gnosis? A Dispute Among Madhyamaka Exponents in India and Tibet**

CENTER FOR BUDDHIST STUDIES

Orna Almogi, University of Hamburg

5pm | IEAS Conference Room, 2223 Fulton Street, 6th Floor

FRIDAY, MARCH 9

CS **Spatial Recall: The Place of Memory in Architecture and Landscape**

COLLEGE OF ENVIRONMENTAL DESIGN

9am – 4:30pm | 112 Wurster Hall



Spatial Recall assembles a group of accomplished scholars and design professionals to discuss the role of memory found or built in the environment and/or in their work.

SPEAKERS:

Alice Aycock (artist, New York) | “Indelible Marker, Palimpsest, Thin Air”

Georges Descombes (Architecture, University of Geneva) | “Displacements: Canals, Rivers, and Flows”

Esther da Costa Meyer (Architectural History, Princeton University) | “Paris: Imperial Vandalism and the Production of Memory”

Adriaan Geuze (landscape architect, Rotterdam) | “The Pyramids at Giza Museum Gardens and the Nile Cultural Landscape”

Matt Kondolf (Landscape Architecture) | “Rivers, Meanders, and Memory”

Luigi Latini (Landscape Architecture, IAUV, University of Venice) | “The Mediterranean Cemetery: Landscape as Collective Memory”

Donlyn Lyndon (Architecture) | “The Place of Memory”

Jorge Otero-Pailos (Historic Preservation, Columbia University) | “The Displaced Memory of Architecture”

Juhani Pallasmaa (Helsinki University of Technology) | “Selfhood, Memory, and the World”

Susan Schwartzenberg (The Exploratorium) | “Re-creating the Past: Notes on the Neurology of Memory”

Andrew Shanken (Architectural History) | “Memorials No More: Desecration, Destruction, Iconoclasm, Neglect”

Marc Treib (Architecture) | “Remembering Ruins, Ruins Remembering”

The symposium continues on March 10. Free registration is required. Register online at ced.berkeley.edu/sites/spatialrecallsymposium.

Co-sponsored by the Townsend Center.

CS Graduate Colloquium on Hispanic and Lusophone Literatures, Linguistics, and Cultures
SPANISH AND PORTUGUESE

Changing Generations: Word, Space, and Image
9am – 6pm | Townsend Center, 220 Stephens Hall

Keynote Address: **Sylvia Molloy**, New York University

Keynote Concert: **Antoni Rossell Mayo**, Universidad Autónoma de Barcelona

The conference continues on March 10. Each day there will be three panels with graduate student presenters from all over the world.

For a complete schedule, visit spanish-portuguese.berkeley.edu/2006/weblogs/graduate-student-conference-march-2007.

Co-sponsored by the Townsend Center.

C 54th Annual Noon Concert Series
MUSIC

String Quartet in E-flat major, op. 74
(Beethoven)

Kristine Pacheco, Natasha Ong (violin), **Michael Uy** (viola), and **Diana Lee** (cello)

12:15pm | Hertz Hall

L The Age of Extremes? Neoliberalism and the Political Ecology of Obesity

INSTITUTE OF INTERNATIONAL STUDIES

Julie Guthman, Community Studies, UC Santa Cruz

3pm | 223 Moses Hall

P Dolly West’s Kitchen

THEATER, DANCE AND PERFORMANCE STUDIES

8pm | Zellerbach Playhouse

Set in Ireland during World War II, *Dolly West’s Kitchen*, by Frank McGuinness, is the gripping and blisteringly funny story of a close-knit Irish family struggling to come to terms, not only with the effects of war on their country, but also with one another as issues of love, sex, jealousy, adultery, homosexuality, and divided loyalties come to the fore. Directed by Christine Nicholson.

The play runs March 2 – 4 and March 9 – 11. For tickets, visit theater.berkeley.edu.

SATURDAY, MARCH 10

CS Graduate Colloquium on Hispanic and Lusophone Literatures, Linguistics, and Cultures
SPANISH AND PORTUGUESE

Changing Generations: Word, Space, and Image
9am – 6pm | Townsend Center, 220 Stephens Hall

Keynote Address: **Fernando Arenas**, University of Minnesota

CS Spatial Recall: The Place of Memory in Architecture and Landscape

COLLEGE OF ENVIRONMENTAL DESIGN

9:30am – 4:30pm | 112 Wurster Hall

CS The Bay Area Concept: Bruce Nauman and the Late 1960s

BERKELEY ART MUSEUM

Craig Douglas Dworkin (University of Utah), **Constance Lewallen** (exhibit curator), **James Melchert** (Art Practice), **Meredith Monk** (multimedia artist), **Robert Riley** (media curator and writer), and **Hans Sluga** (Philosophy)

3pm | Berkeley Art Museum Theater

P Dolly West’s Kitchen

THEATER, DANCE AND PERFORMANCE STUDIES

8pm | Zellerbach Playhouse

SUNDAY, MARCH 11

P Dolly West’s Kitchen

THEATER, DANCE AND PERFORMANCE STUDIES

2pm | Zellerbach Playhouse

MONDAY, MARCH 12

CS The Anarcha Project

ENGLISH

6pm | 285 Kroeber Hall

In this series of workshops and performances, three scholar/performers investigate the history of medical experimentation on black disabled people and its ongoing effects on healthcare inequalities today. Participants will engage with questions of process as well as with historical and theoretical issues. The project will end with a performance on March 14.

Speakers/Performers: **Petra Kuppers** (English, University of Michigan), **Anita Gonzalez** (Theater Arts, State University of New York, New Paltz), **Carrie Sandahl** (Theater, Florida State University), and **Tiye Giraud** (vocalist, percussionist, and composer, New York).

The workshop on March 12 is intended for UC Berkeley students and invited guests. Events on March 13 and 14 are open to all. For further information contact the English Department at 510/642-3467.

Co-sponsored by the Townsend Center.

TUESDAY, MARCH 13

L Theological Aspects of Stem Cell Research

SCIENCE, TECHNOLOGY, AND SOCIETY CENTER

Nancy Duff, Stephen Colwell Associate Professor of Christian Ethics, Princeton Theological Seminary

12:30pm | 20 Wheeler Hall

An ordained Presbyterian minister, Nancy Duff focuses her research on the theological foundations of Christian ethics. Writing from the Reformed tradition with a feminist perspective, she explores how theological claims identify the church's responsibility in the world. She teaches courses in the theology and ethics of Dietrich Bonhoeffer, the theology and ethics of James Cone, issues in biomedical ethics, issues in human sexuality, the doctrine of vocation, and the ethics of the Ten Commandments.

L War and Peace in the Middle East: How Will Israel Face the New Realities

INSTITUTE FOR INTERNATIONAL STUDIES

Zeev Schiff, *Haaretz*

3pm | 223 Moses Hall

CS The Anarcha Project

ENGLISH

6pm | 285 Kroeber Hall

Second workshop in the series. Free and open to the public.

EVENT KEY

- C** CONCERTS
- E** EXHIBITIONS
- P** PERFORMANCES AND FILMS
- CS** CONFERENCES AND SYMPOSIA
- L** LECTURES, COLLOQUIA AND READINGS

L The Una's Lecture

TOWNSEND CENTER FOR THE HUMANITIES

"Religion and Freedom of Speech: Cartoons and Controversies"

Robert Post, David Boies Professor of Law, Yale University

7:30pm | Lipman Room, Barrows Hall



Although freedom of speech is necessary for democracy, democratic states nevertheless legitimately and routinely regulate speech. There is an enduring tension between democracy's need for a free and open public sphere and democracy's need to protect dignity and ensure civility. In recent years, this tension has been prominently featured in European controversies concerning the publication of possibly blasphemous and Islamophobic Danish cartoons.

In the 2006-2007 Una's Lecture, Robert Post will discuss these controversies with particular attention to how the law in Europe and America has sought to reconcile maintaining a democratic public sphere with protecting religious truths and sensibilities.

A follow-up panel discussion will take place on March 14 at the Townsend Center. Both events are free and open to the public. No tickets are required.

L The Twilight of Posterity

ART, TECHNOLOGY AND CULTURE COLLOQUIUM

Kaja Silverman, Rhetoric and Film Studies

7:30pm | 105 North Gate Hall

Co-sponsored by the Townsend Center.

WEDNESDAY, MARCH 14

L The Avant-garde that Cannot Identify Establishment: Modern Chinese Poetry as the Worship of Modernity

CENTER FOR CHINESE STUDIES

Hsiao-yen Peng, Institute of Chinese Literature and Philosophy, Academia Sinica

Noon | 3401 Dwinelle Hall

L Government Actions and Innovation for Climate Change

CENTER FOR INFORMATION TECHNOLOGY RESEARCH IN THE INTEREST OF SOCIETY

Margaret Taylor, Goldman School of Public Policy

Noon | 290 Hearst Memorial Mining Building

C 54th Annual Noon Concert Series

MUSIC

Sonata k. 570 (Mozart), *Canzone* and *Tarantella* from *Venezia e Napoli* (Liszt), and *Fantasy Pieces* (David Del Tredici)

Jessie Lee (fortepiano and piano)

12:15pm | Hertz Hall

L The Una's Lecture Panel Discussion

TOWNSEND CENTER FOR THE HUMANITIES

Robert Post (David Boies Professor of Law, Yale University), **Deniz Göktürk** (German), **David Hollinger** (History), and **Saba Mahmood** (Anthropology); moderated by **Anthony J. Cascardi** (Director of the Townsend Center).

4pm | Townsend Center, 220 Stephens Hall

CS Understanding Tibetan Monastic Music in the 21st Century

CENTER FOR BUDDHIST STUDIES/CAL PERFORMANCES

Benjamin Bogin (Music), **Kiela Diehl**, (Stanford University) and **Jessie Wallner** (Indiana University)

4pm | Seaborg Room, The Faculty Club

An introduction to Tibetan musical structure and theory in preparation for the evening's performance by the Gyuto Monks at Zellerbach Hall. The speakers will situate the monks' performance in the context of the history of Tibetan monastic rituals, including the cultural transformations that occur when a ritual is displaced from the monastery to the stage.

For information, visit calperfs.berkeley.edu.

P CS The Anarcha Project

ENGLISH

7pm | 285 Kroeber Hall

A performance and follow-up discussion. Free and open to the public.

THURSDAY, MARCH 15

L Origins of a California Maverick

BANCROFT LIBRARY

Sean Burns, History of Consciousness, UC Santa Cruz

12:10pm | Lewis-Latimer Room, Faculty Club

L Cogne, or Ah, Wilderness! The Anna Maria Franzoni Murder Trial(s) and the Media

ITALIAN STUDIES

Ellen Nerenberg, Romance Languages and Literatures, Wesleyan University

5pm | 219 Dwinelle Hall

L Copley's Cargo: Aesthetics and the Dilemma of Transit

ART HISTORY

Jennifer Roberts, History of Art, Harvard University

5:15pm | 308J Doe Library

L Holloway Poetry Series

ENGLISH

Joshua Clover and **Colin Dingler**

6:30pm | Maude Fife Room, 315 Wheeler Hall

P L An Introduction to Hindustani Classical Music

HEARST MUSEUM OF ANTHROPOLOGY

Srinivas Reddy

7pm | 102 Kroeber Hall

FRIDAY, MARCH 16

CS 21st-Century Enlightenment: New Perspectives on the 18th Century

RHETORIC

9am – 7:30pm | Heyns Room, Faculty Club

Bringing together scholars from a number of different disciplines, this conference will work to lay the ground for a novel engagement with the Enlightenment from the perspective of our own newly troubling, but also promising, century.

SPEAKERS:

John Bender (Stanford University) | “Reason and Rational Choice: Enlightenment Theory and Modern Analytic”

Dorothea von Mücke (Columbia University) | “Where Nature Gives the Rule to Art: History, Chance and the Order of Nature in the Discourse on Originality and Genius”

Keith Baker (Stanford University) | “On: Enlightenment and Revolution”

Susan Maslan (French) | “Trouble in Paradise: Human Rights and Biopolitics from Zizek to Diderot”

Jessica Riskin (Stanford University) | “The Divine Optician”

Jonathan Sheehan (Michigan University) | “Between the Mechanical and the Miraculous: Enlightenment and its Orders”

The conference continues on March 17. For more information visit rhetoric.berkeley.edu/news.html.

Co-sponsored by the Townsend Center.

C 54th Annual Noon Concert Series

MUSIC

String Quintet in G major (Brahms), *Distance de Fee for Violin and Piano* (Takemitsu), and *Sonata for Violin and Piano* (Debussy)

Christy Kyong, **Mandy Peng**, **Timothy Wong** (violin), **Jeness Hartley**, **Giuliana Conti** (viola), **Ting Chin** (cello), and **Jared Redmond** (piano)

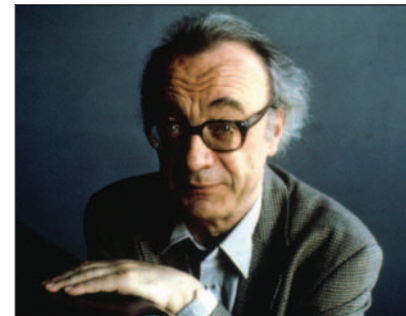
12:15pm | Hertz Hall

L Forum on the Humanities and the Public World

TOWNSEND CENTER FOR THE HUMANITIES

Pianist and author **Alfred Brendel** in conversation with **Anthony J. Cascardi**, Director of the Townsend Center

5pm | Great Hall, Bancroft Hotel, 2680 Bancroft Way, Berkeley



Alfred Brendel is recognized by audiences the world over for his legendary ability to communicate the emotional and intellectual depths of whatever music he performs. He has performed with virtually all leading orchestras and conductors and is the recipient of numerous awards and honors. He is also a successful author. In addition to his latest books, *Alfred Brendel on Music* and *Ausgerechnet Ich (Me Of All People)*, he is a frequent contributor to *The New York Review of Books*. His volumes of poetry include *One Finger Too Many*.

On March 16, Brendel will speak informally about his writing on music and his poetry as part of the Townsend Center's Forum on the Humanities and the Public World.

Please note that on March 18, Cal Performances will present Brendel in recital at Zellerbach Hall. Brendel will

perform works by Hayden, Beethoven, Schubert, and Mozart. For tickets to the recital, phone 510/642-9988 or visit calperfs.berkeley.edu.

Brendel's participation in the Forum on the Humanities and the Public World is funded by the Avenali Endowment and is presented in association with Cal Performances. Tickets to the March 16 event are not required.

SATURDAY, MARCH 17

CS 21st-Century Enlightenment: New Perspectives on the 18th Century RHETORIC

10am – 6pm | Heyns Room, Faculty Club

SPEAKERS:

Richard Wittman (Art History, UC Santa Barbara) | “Architecture, Space, and the Image of Unity”

Ian Duncan (English) | “‘Dirt Good Store’: National Character or National Culture”

David Bates (Rhetoric) | “Emergent States”

Carla Hesse (History) | “Reading in Extremis: Revolutionaries Respond to Rousseau”

Sankar Muthu (Political Science, Princeton University) | “Globalization and Enlightenment Thought: Historical Debates, Contemporary Dilemmas,” with respondent **Pheng Cheah** (Rhetoric)

EVENT KEY

- C** CONCERTS
- E** EXHIBITIONS
- P** PERFORMANCES AND FILMS
- CS** CONFERENCES AND SYMPOSIA
- L** LECTURES, COLLOQUIA AND READINGS

CS Cultural Exchanges Along the Silk Road

CAL PERFORMANCES

2pm | Hertz Hall | Free

The conference emphasizes the historical significance of the Silk Road, focusing on the range of cultural transmission and the cross-cultural connections along these paths. The discussion will encompass the arts of Persia, India, Central Asia, China, and Japan.

Speakers: **Patricia Berger** (Art History), **Izaly Zemtsovsky** (visiting scholar), **Alma Kunanbaeva** (visiting scholar, Stanford University), **Peter K. Marsh** (Conservatory of Music, Lawrence University), **Mary-Ann Milford** (Provost and Dean of Faculty, Art History, Mills College), and **Martin Schwartz** (Near Eastern Studies), with a possible guest appearance by musicians of the Silk Road Ensemble.

The conference has been organized in conjunction with the Silk Road Project concerts featuring cellist Yo-Yo Ma on March 16 – 17.

Co-sponsored by the Townsend Center, the Silk Road Working Group, Near Eastern Studies, and International and Area Studies.

C Martin Carthy in Concert

MUSIC

Martin Carthy, English folk singer

8pm | Hertz Hall

Regent's Lecturer Martin Carthy will be in residence in the Department of Music March 12 – 23. Visit <http://music.berkeley.edu> for more information.

SUNDAY, MARCH 18

C Alfred Brendel in Concert

CAL PERFORMANCES

Alfred Brendel, pianist

5pm | Zellerbach Hall B

Brendel will perform works by Hayden, Beethoven, Schubert, and Mozart.

For tickets, phone 510/642-9988 or visit calperfs.berkeley.edu.

MONDAY, MARCH 19

L Jefferson Memorial Lecture

THE GRADUATE COUNCIL

“From Jefferson to Forrest Gump: How the Mall in Washington Became the Nation's Most Venerated Civic Space”

Michael Kammen, Newton C. Farr Professor of American History and Culture, Cornell University

4:10pm | Lipman Room, Barrows Hall

A specialist in colonial American history, Pulitzer Prize-winning historian Michael Kammen has also published extensively on 20th-century and contemporary American popular culture. A central theme in his wide spectrum of work is the usefulness of history in American society.

TUESDAY, MARCH 20

L Japanamerica: How Japanese Pop Culture has Invaded the U.S.

INSTITUTE OF EAST ASIAN STUDIES

Roland Kelts, University of Tokyo

4pm | IEAS Conference Room, 2223 Fulton Street, 6th Floor

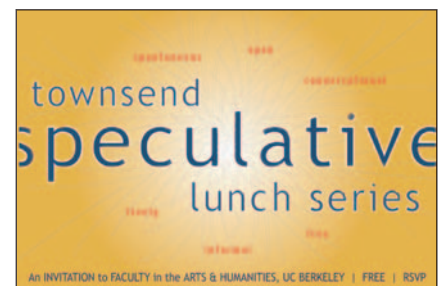
WEDNESDAY, MARCH 21

L Speculative Lunch Series

TOWNSEND CENTER FOR THE HUMANITIES

Noon | Townsend Center, 220 Stephens Hall

Topic: “Language and Politics”



The series is open to faculty and graduate students at UC Berkeley. Lunch is provided. Please RSVP to townsend_center@ls.berkeley.edu. For a complete series listing, visit townsendcenter.berkeley.edu/speculativelunches.shtml.

C 54th Annual Noon Concert Series
MUSIC

Selections from *Aires de Sefarad, 46 Spanish Folk Songs* (Jorge Liderman)

Duo 46: Beth Ilana Schneider (violin) and **Matt Gould** (guitar)

12:15pm | Hertz Hall

CS Food Rules: A Teach-in on the 2007 Farm Bill

GRADUATE SCHOOL OF JOURNALISM

Michael Pollan (Graduate School of Journalism), **Dan Imhoff** (author), and **George Naylor** (National Family Farms Coalition)

7pm | Wheeler Auditorium

THURSDAY, MARCH 22

CS Mapping Nordic Literature
SCANDINAVIAN

10am – 5pm | 370 Dwinelle Hall

Recent interest in the space and place of literature has sparked innovative thinking about literary cartography, the figuration of landscape, and the geographic imagination. This all-day symposium deals with the mapping of Nordic literature in both the literal and metaphoric sense, and features distinguished guest speakers from Sweden, Norway, Denmark, and the Faroe Islands.

SPEAKERS:

Mark Sandberg (Scandinavian and Film Studies) | Introduction

Henning Wærp (University of Tromsø, Norway) | “Fritjof Nansen and the Figuration of the Arctic”

Malan Marnesdottir (University of the Faroe Islands) | “Mapping the Faroe Islands: Literary and Military Cartography”

Dan Ringgaard (Aarhus University, Denmark) | “Mapping and Poetry”

Kenneth R. Olwig (University of Lund, Sweden) | “Portolan Narrative’ and the ‘Mapping’ of the Literary Landscape”

A reception will be held at the end of the day’s program at 4 pm in 370 Dwinelle Hall.

For more information, contact the Scandinavian Department at 510/642-4484.

The event is co-sponsored by The Nordic Council of Ministers and The Norway House Foundation.

L The French Presidential Elections
INSTITUTE OF EUROPEAN STUDIES

Laurent Bouvet, Université de Nice-Sophia Antipolis

Noon | 223 Moses Hall

E Hush, Hush: Paintings by Katherine Sherwood

TOWNSEND CENTER FOR THE HUMANITIES

Reception with the artist

4pm | Townsend Center, 220 Stephens Hall



Katherine Sherwood teaches in the Art Department at UC Berkeley. Her mixed-media paintings gracefully juxtapose abstracted medical images, such as cerebral angiograms of the artist’s brain, with calligraphic renderings of ancient symbols. Her paintings investigate the point at which the essential aspects of art, medicine, and disability intersect — playing with our striving to know more, to control our future.

Sherwood has exhibited her work in many solo shows, most recently in Los Angeles and Philadelphia. Her work has also appeared in many group exhibitions, including “Visionary Anatomies” at the National Academy of Sciences in

2005, “Inside Out Loud: Visualizing Women’s Health in Contemporary Art” at the Kempner Museum in 2004, and the Whitney Art Museum biennial in 2000. She has also exhibited in New York, Chile, Japan, and Thailand. She has been the recipient of numerous awards, including a National Endowment for the Arts Artist Fellowship, the Adaline Kent Award from the San Francisco Art Institute, and a Guggenheim Fellowship.

Sherwood’s work will be on exhibit March 11 – May 31, 2007 at the Townsend Center. Please call 510/643-9670 for viewing hours.

L The Jewish Enemy: Nazi Propaganda During World War II and the Holocaust

INSTITUTE OF EUROPEAN STUDIES

Jeffrey Herf, University of Maryland

4pm | 201 Moses Hall

L Regional Feasts of India

HEARST MUSEUM OF ANTHROPOLOGY

Lachu Moorjani, restaurant entrepreneur

7pm | Hearst Museum of Anthropology, 102 Kroeber Hall

FRIDAY, MARCH 23

C 54th Annual Noon Concert Series
MUSIC

Works by Shostakovich and Gary Noland

April Paik, **Jessica Ling** (violin), **Tovah Keynton** (viola), and **Kai Chou** (cello)

12:15pm | Hertz Hall

SUNDAY, MARCH 25

L Excavations in the Mut Temple Precinct at Karnak

NEAR EASTERN STUDIES

Betsy Bryan, Egyptian Art and Archaeology, Johns Hopkins University

2:30pm | 20 Barrows Hall



NON-PROFIT ORGANIZATION

U.S. POSTAGE

PAID

UNIVERSITY OF CALIFORNIA

TOWNSEND CENTER FOR THE HUMANITIES

University of California
220 Stephens Hall, MC 2340
Berkeley, CA 94720
HG-09

Photo credits:

Cover: *Between the Sexes*, Katherine Sherwood, 2006;
permission of the artist.

Page 2: Robert Post; courtesy Michael Marsland/Yale
University. Alfred Brendel; courtesy Isolde Ohlbaum.

Page 4: *The Three Dancers*, Pablo Picasso, 1925;
© Succession Picasso, DACS 2002.

Page 6: *Ariadne*, Giorgio de Chirico, 1913;
© Artists Rights Society, New York / SIAE, Rome.